



# A research vessel for the Pacific

*RV Pasifika*



## Who is the Pacific Community (SPC)?

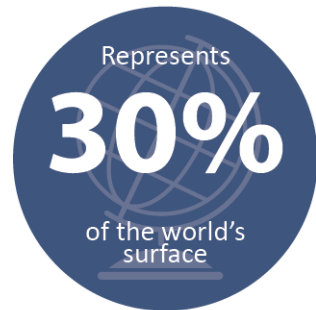
- Principal scientific and technical organisation in the Pacific
- Founded in 1947
- A scientific and technical intergovernmental development organisation serving 27 country and territory members
- Active in over 25 sectors
- Governed by Pacific Countries and communities
- 1000 staff
- Headquarters Noumea, New Caledonia



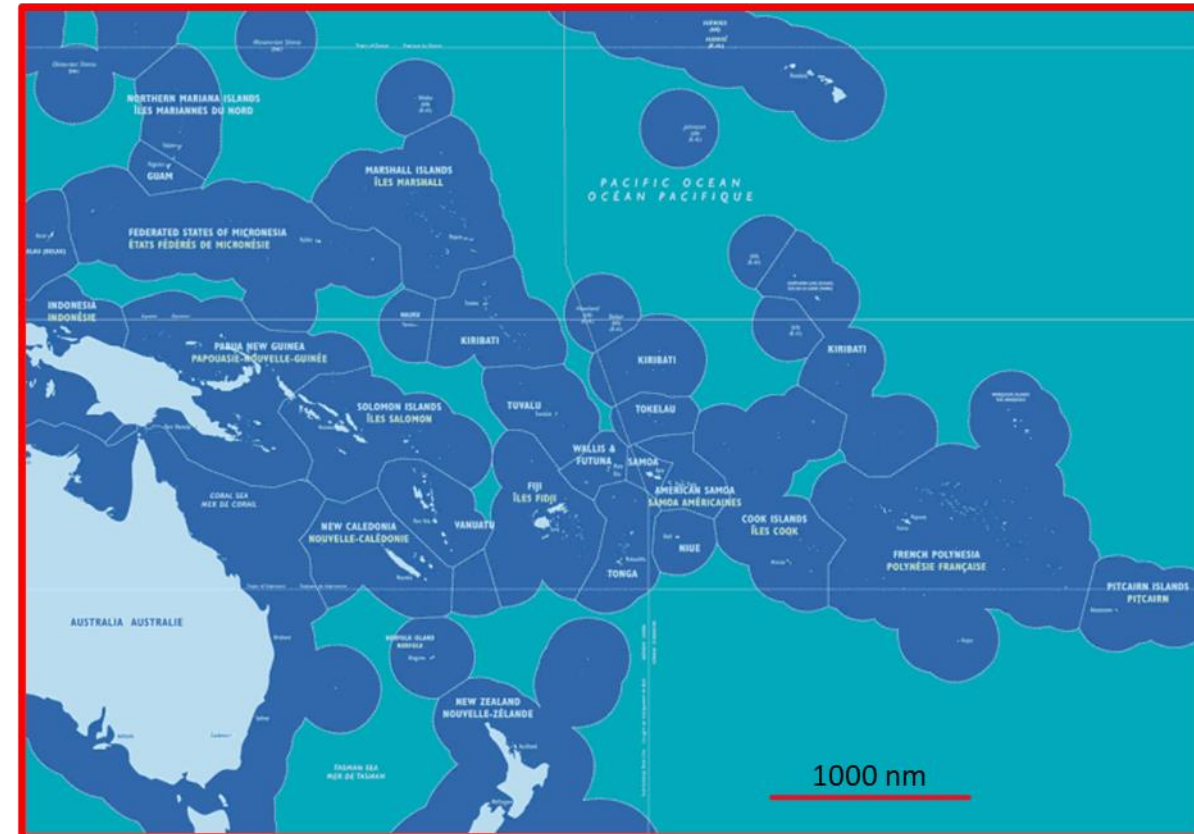
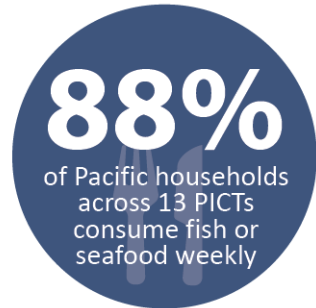
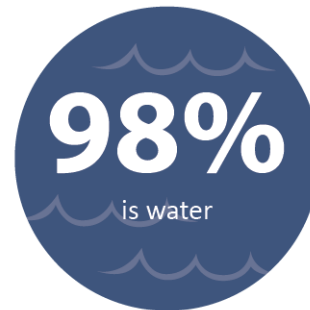
# Pacific Relevance



## Why do we need a Fisheries Science Vessel for the Pacific?



The Pacific Region



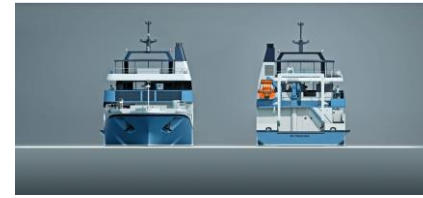
# The needs



Photo: Fabien Forget

- The first truly 'Pacific' owned Research vessel.
- Servicing and owned by 27 countries.
- Develop Pacific marine & science capability
- The only dedicated research vessel for Pacific tuna stocks (yellow fin, albacore, skipjack).
- The Pacific Island economy survives off its fishery, which also provides subsistence for local populations.
- Climate change is disrupting fish stocks. The research vessel is a tool for understanding.
- Vessel design to be 30 to 50% more energy efficient than a conventional vessel of this size.

# RV Pasifika Project Team



- **Project Director - Robert Christie - SPC**
- **Technical Manager - Bruno Leroy - SPC**
- **Naval Architect – Ship ST**
- **Vessel Build Management Company – Genavir**
- **Shipyard TBD**



# Flag & Classification



Special service / Research vessel

Unrestricted navigation

I ✘ HULL, ✘ MACH

✘ AUT-UMS

CLEANSHIP SUPER  
(AWT-A/B, NDO-7 days, OWS-5 ppm)

MON-SHAFT

INWATERSURVEY

BATTERY SYSTEMS

GREEN PASSPORT

# Functional requirements



Main objective: Collect data on tropical tuna species and their environment

- Operational 250 days a year
- Tuna tagging missions (90 to 100 days/year)
- Ecosystem monitoring (60 days/year)
- Oceanographic capability
  - Multibeam
  - CTD
  - DTIS/Cameras
  - Autonomous sensors
- Mooring deployment
- Diving surveys



# Vessel capabilities



## Main dimensions

- 48m x 11.6m x 3.5m
- 6,000 nm range
- 26-person accommodation (incl. min. 9 crew)

## Fishery

- 2 x Trawl winches (3000 m cable)
- 1 x Net Roller
- Various ancillary specialty winches

## Oceanographic Functionality

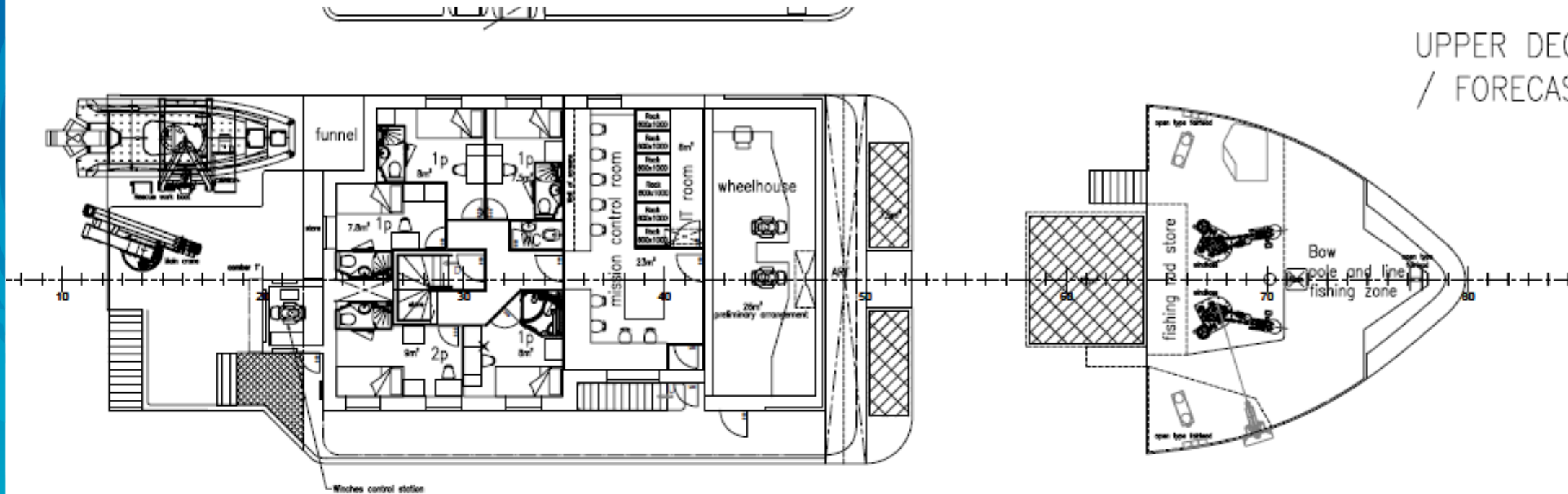
- Silent A and Light F
- A Frame (8 tonnes SWL)
- Crane (8T at 10 m in port)
- CTD Winch
- Drop keel
- Various sensors and echosounders
- 1 x 20' container (or 2x 10')



# GA/ Upper Deck



Pacific Community  
Communauté du Pacifique

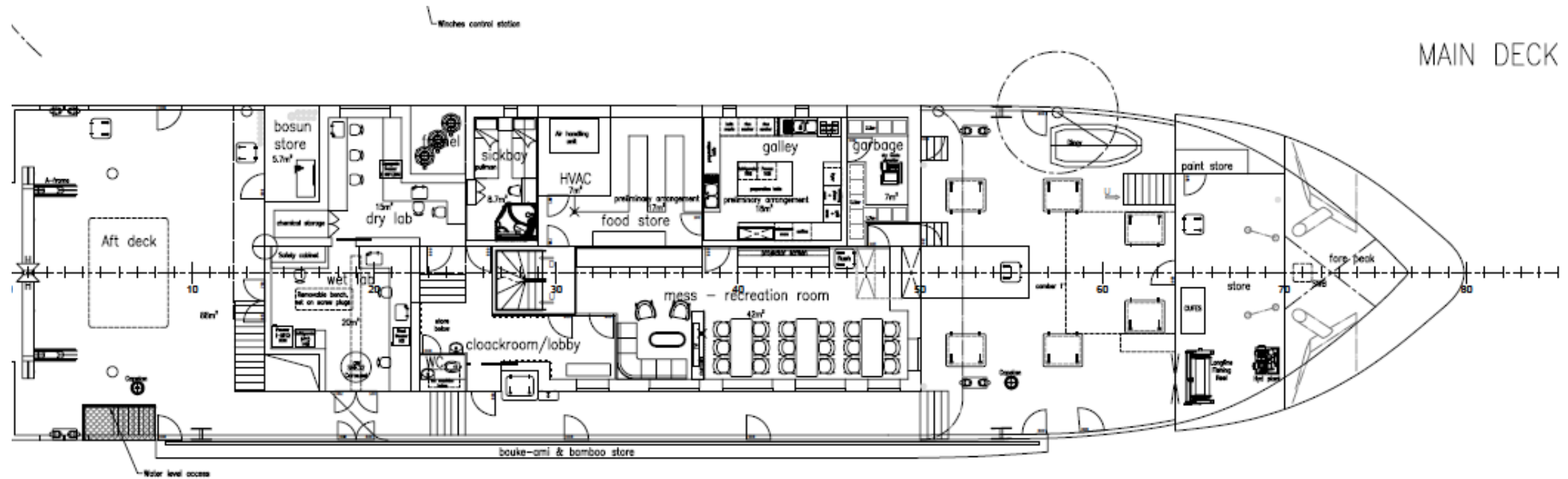


UPPER DECK  
/ FORECASTLE DECK

# GA/ Main Deck



Pacific  
Community  
Communauté  
du Pacifique

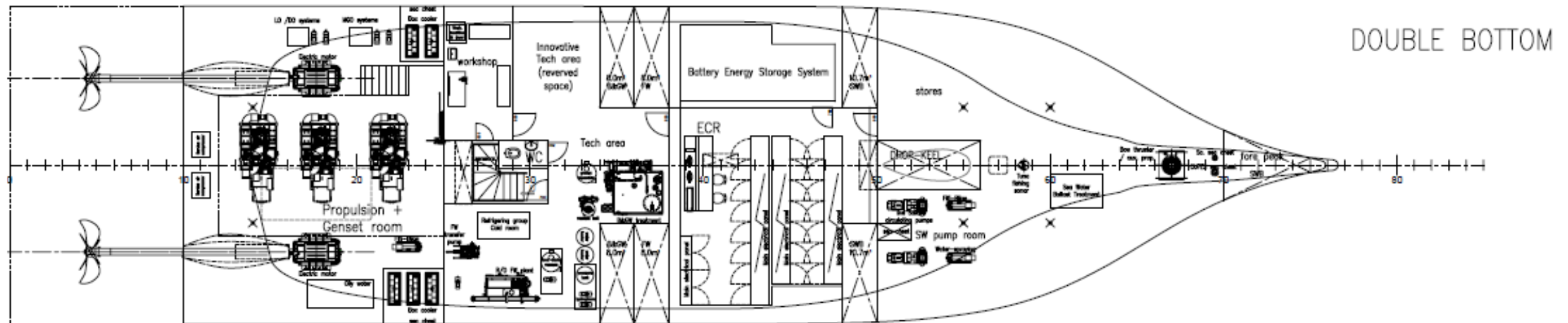




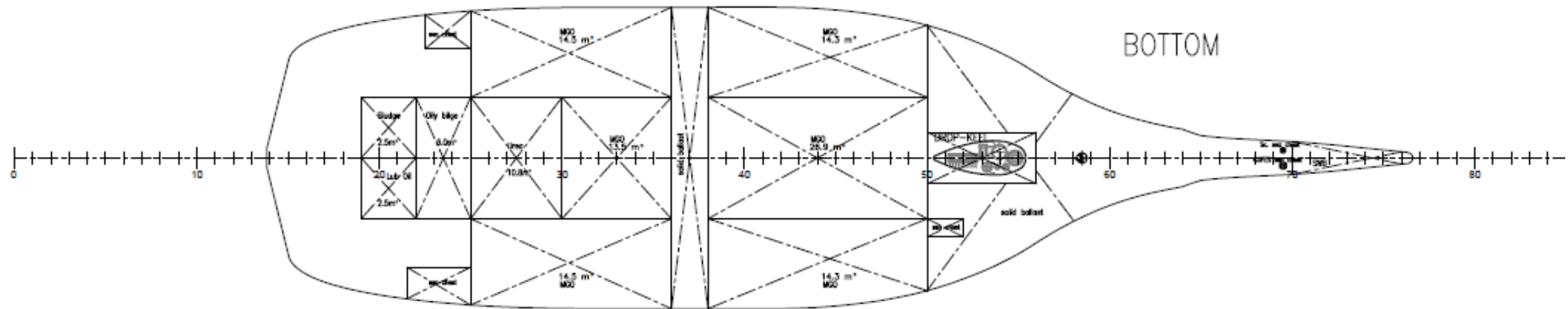
# GA/ Double Bottom



Pacific  
Community  
Communauté  
du Pacifique



# GA/ Bottom



# Energy Efficiency



## Energy Efficient Design

- Diesel-electric propulsion with Tier 3 generators
- Large battery park capacity- Upgrade possible
- Hull- propeller optimisation
- Thermal insulation/double doors
- Energy recovery (heat exchangers, solar panels)
- Design features for emerging technologies



# Items of Note

---



- Silent vessel
- Drop keel (detail design by Yard or specialist)
- Special bow design for 'Pole and Line' fishing
- Bait tanks and bait handling system
- Bouke-Ami bait fishing system
- Weight sensitive
- Energy efficiency
- High sea and air temperatures and humidity
- Draft limitation

# Donors

Australia

New Zealand

USA



Pacific  
Community  
Communauté  
du Pacifique



# Operational Costs



- We are seeking to provide sea days for Pacific based outcomes.
- We are looking for donors to fund the operational model.
- Available at a day rate for commercial operations.

# SHIPYARD 2025 RFP PROCESS



ITEMS	DATE
<b>RFP ROUND 1</b>	
Publication of RFP documents– Round 1	2-Sep-25
Submission Deadline for Proposals – Round 1	2-Nov-25
<b>RFP ROUND 2</b>	
Publication of RFP documents – Round 2	15-Dec-25
<b>Contract award and execution</b>	
Estimated date of notification of contract award to Successful Bidder	27-Feb-26
Expected vessel delivery date	end of 2028

# Questions?



Pacific  
Community  
Communauté  
du Pacifique

