

IRSO 2023

Connecting Oceans of Knowledge

Green equipment for RV's

Connecting Oceans of Knowledge

Worldwide Sales and Service Support



- **Group Headquarters**
Esbjerg, Denmark
- **Subsidiaries and Sales Offices**
21 locations in Europe, North America, Asia and Oceania
- **Distribution Network**
24 locations around the world

Founded in 1978 by Martin and Winnie MacArtney
~ 450 employees including group companies

MacArtney operations



Operations and distributors

Denmark | Norway | Sweden | Finland | United Kingdom | Netherlands | Germany | Poland | France
Spain | Portugal | Italy | UAE | Israel | Turkey | South Africa | USA | Canada | Mexico | Colombia | Chile | Brazil |
Singapore | China | India | Pakistan | South Korea | Japan | Taiwan | Australia



The all-new, all-electric MacArtney eLARS series A-frame

Unique features

Low Cost Of Ownership (maintenance):

- Spares are low weight, and easily accessible, providing significantly reduced maintenance effort onboard
- Commercial Off-The-Shelf (COTS) spare parts provide easy and low-cost repairs with short delivery times.
- Maintenance work is low tech and does not require a hydraulic engineer – less need for special training
- No periodic pressure testing and replacement of hydraulic hoses and oil filters etc.
- The electronic control system provides a seamless operation, and thus reduced wear

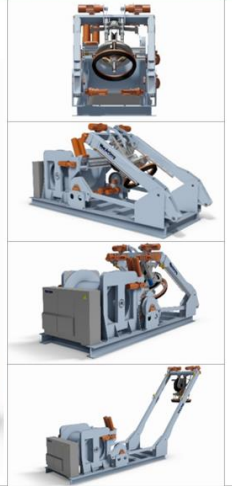
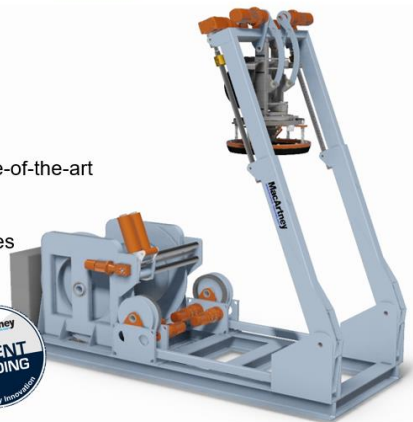
Low Cost Of Ownership (installation and operation):

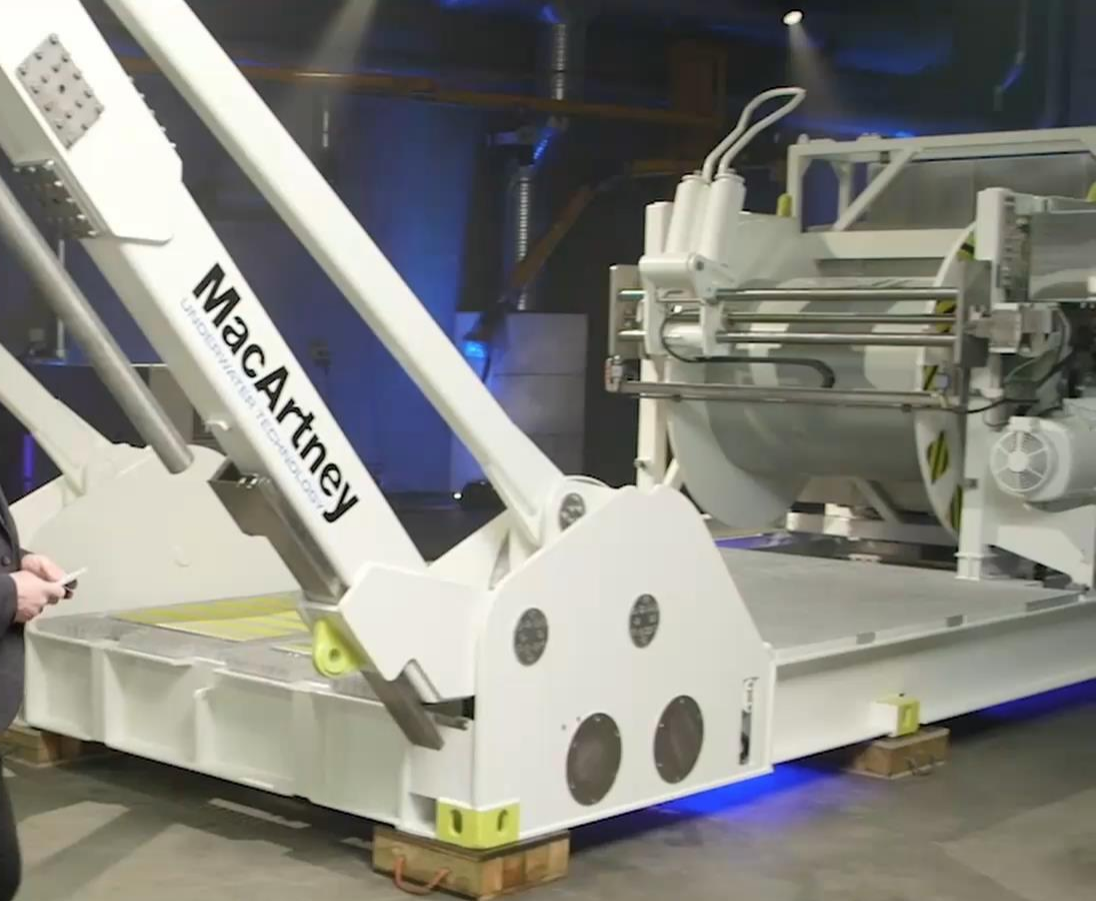
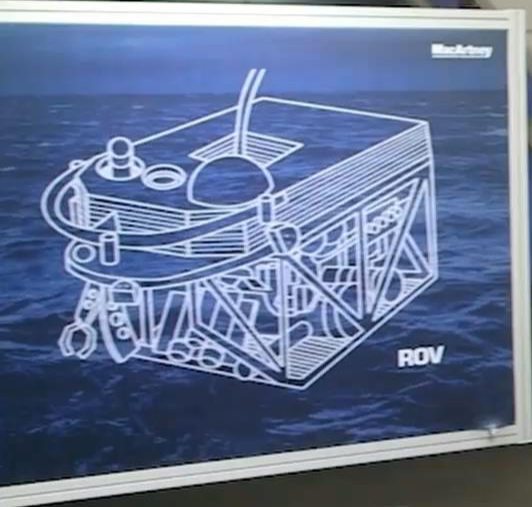
- Full integration possibilities with MacArtney (or other) eWINCHES, providing options for converting to ONE-man-handling
- System can be provided fully connectorized providing Plug-And-Play installation

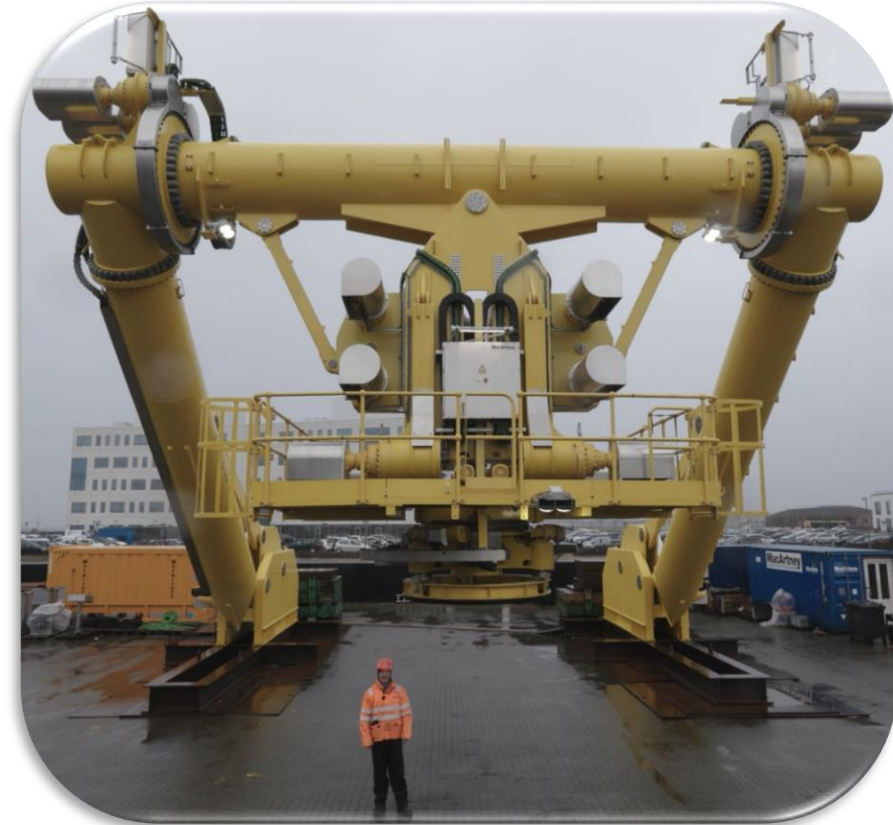
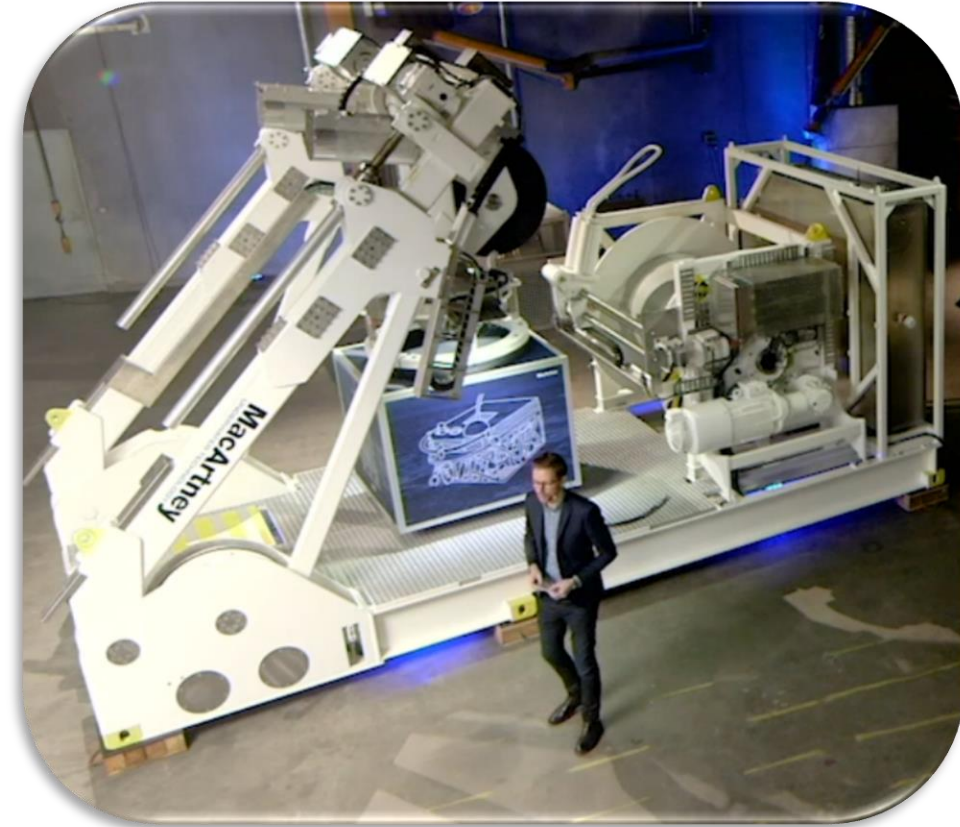


The all-new, all-electric MacArtney eLARS series A-frame

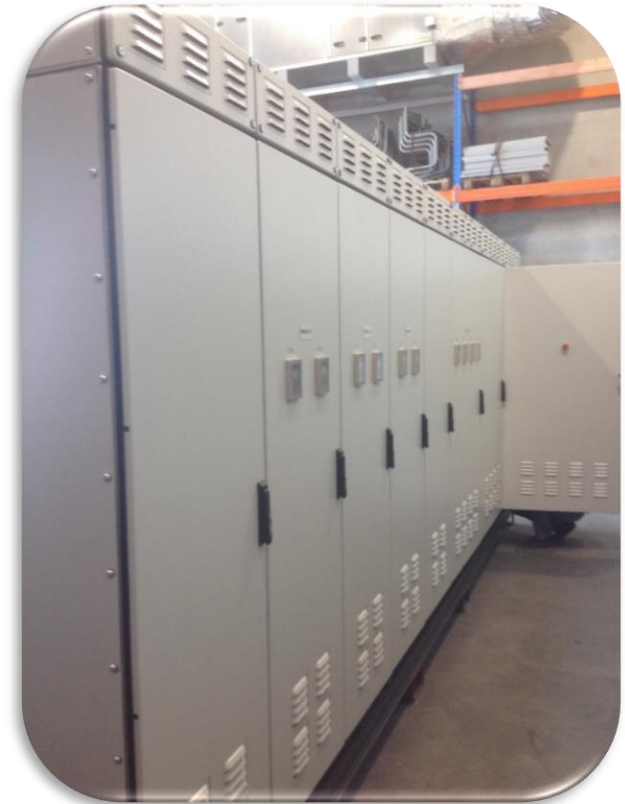
- All-electric
- Environmentally friendly
- Low cost of ownership
- Intelligent control system provides state-of-the-art real-time load and health feedback
- Control system supports future upgrades
- Versatile features, installation and application
- Based upon 40+ years of MacArtney technology





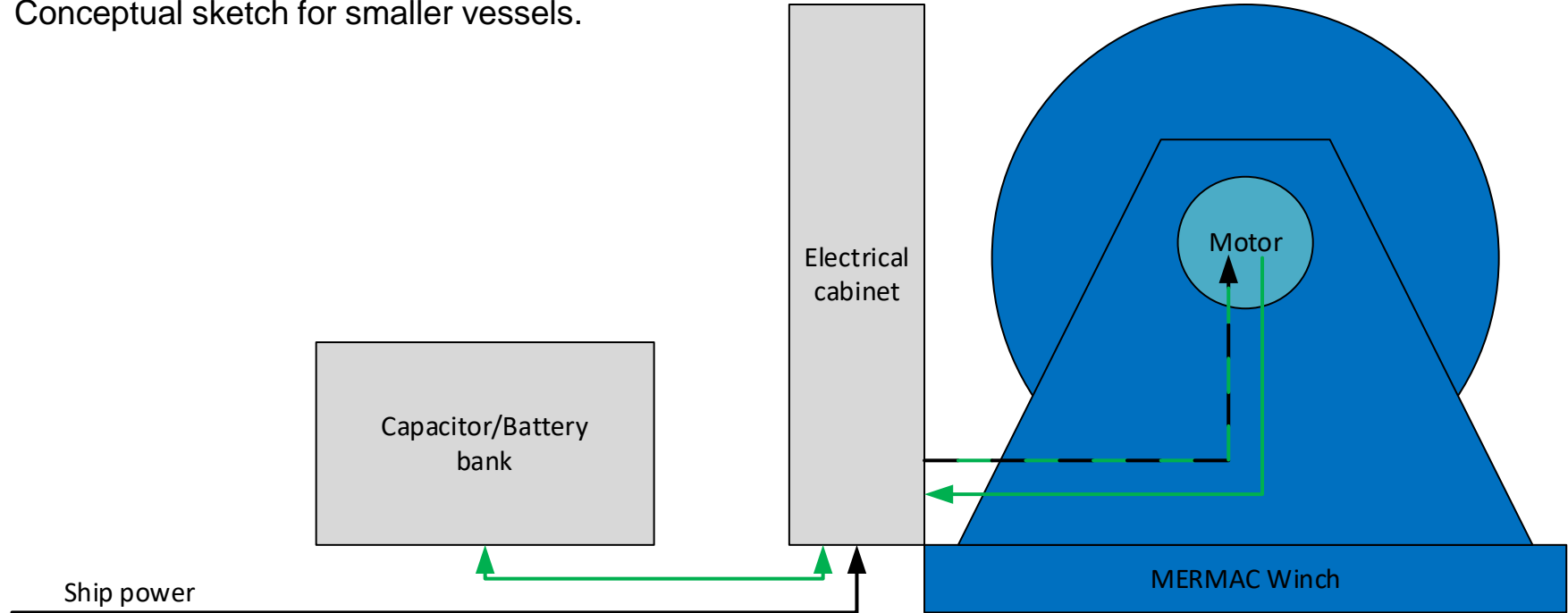


Regeneration of power



Regeneration and storage of power

Conceptual sketch for smaller vessels.



Recycling of materials

Where possible we use materials with high degree of recycled materials.

We make sure to re-use all "left-over" materials – by returning it to raw-material plants.

We design new products to be modular, and re-useable and configurable.



Green ruggedized connectivity



Modular thinking



Reducing required shiptime



Reducing required shiptime



MacArtney brands



SubConn



OptoLink



TrustLink



TrustLink API



GreenLink



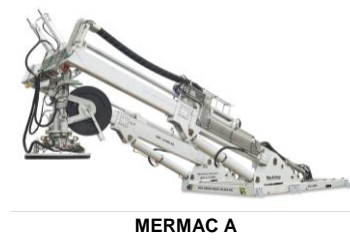
CORMAC



MERMAC



MERMAC eA



MERMAC A



MERMAC D



LUXUS



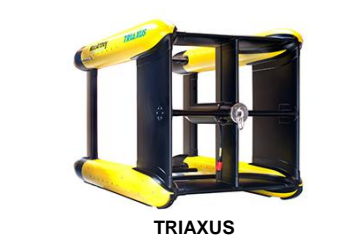
EMO



NEXUS



FOCUS



TRIAXUS

World-wide sales and service support



Thank you for your attention

For further information

please visit:

www.macartney.com

or contact me at:

lj@macartney.com

WHO DO
YOU TRUST?