

Eurofleets



“New operational steps towards an alliance of European research fleets”

EUROFLEETS TransNational Access (TNA)

IRSO 2015, San Diego – USA, October 2015



www.eurofleets.eu

What are the EUROFLEETS projects ?

« A first attempt to structure European research fleets by bringing together the European research fleets owners and operators to enhance their coordination and to promote the cost-effective use of their facilities »

- Two I3 (*Integrated Infrastructure Initiative*) projects funded by the EU 7th Framework Program
 - **EUROFLEETS(1)**: September 2009 – August 2013 - **OVER**
 - **EUROFLEETS2**: March 2013 – February 2017 - **ONGOING**
- **Budget**: a total **EC contribution of 16.2 M€** for both projects (upon more than 20 M€ budget) with 3 heavy contributors (Germany, Italy, France) and with almost **7 M€ (40%)** for Trans National Access.



What are the EUROFLEETS projects ?

- **31 beneficiaries from 20 European countries** in EUROFLEETS2 working on 3 strongly connected and complementary Activities: **Networking, Joint Research and TransNational Access**

- **TransNational Access: 20 ship operators or equipment operators from 15 countries** offering access to **22 Research Vessels and 4 pieces of equipment**

- *Aegaeo* (HCMR)
- *Akademic* (IO-BAS)
- *Angeles Alvarino* (IEO)
- *Belgica* (RBINS-MUMM)
- *Bios-DVA* (IOF)
- *Celtic Explorer* (MI)
- *Celtic Voyager* (MI)
- *G.O Sars* (IMR)
- *Hespérides* (CSIC)
- *Magnus Heinason* (Havstovan)
- *Mare Nigrum* (GeoEcoMar)
- *Marion Dufresne* (IPEV)
- *Tubitak Marmara* (Tubitak)
- *OGS-Explora* (OGS)
- *Polarstern* (AWI)
- *Pourquoi pas?* (Ifremer)
- *Ramon Margalef* (IEO)
- *Salme* (TUT)
- *Sanna* (GINR)
- *Sarmiento de Gamboa* (CSIC)
- *Simon Stevin* (VLIZ)
- *Urania* (CNR)



The TransNational Access implemented in EUROFLEETS : an essential tool ...

- To further strengthen scientific exchange at European and international levels, through the wide and impressive partnership generated by the TNA calls
- To run research programs which would be difficult or impossible to conduct on a national level
- Demonstrating that new collaborations and joint research programs can be initiated and developed thanks to the EU-funding leverage effect



EUROFLEETS2 TNA CALLS

Regional 1: 6 proposals, 36 partners from 14 countries,
2 industrial participants

Regional 2: 22 submitted proposals, 122 partners from 25
countries, 2 industrial participants

Regional 3: 17 submitted proposals, 120 partners from 25
countries, 1 industrial participant

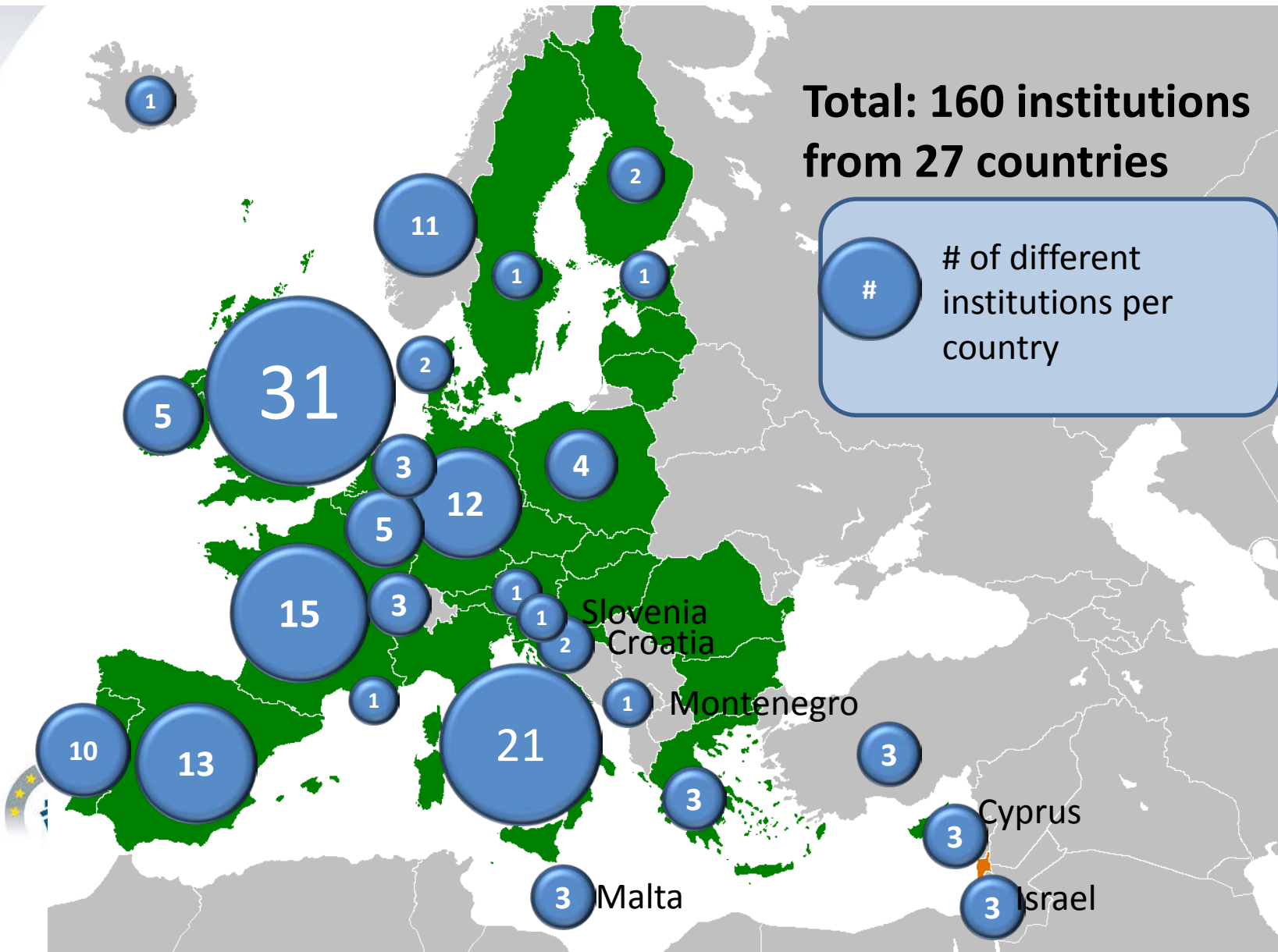
Super Integration: 4 proposals, 56 partners from 18 countries

Embarked Equipment: 1 proposal, 9 partners from 7 countries

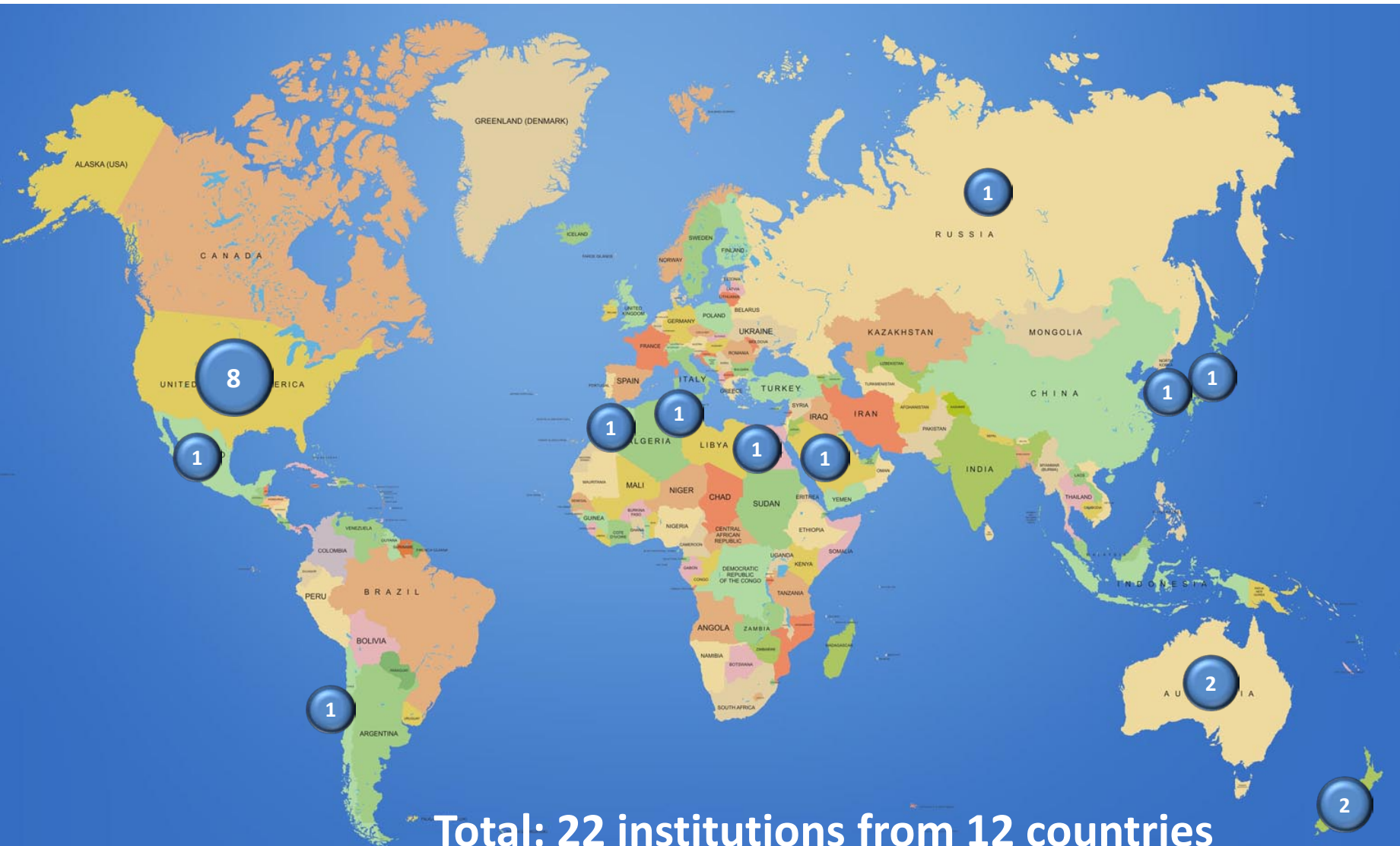
**In total: 50 proposals submitted, with partners
from 41 countries**



Number of participating institutions per country (EU members states and associated countries)



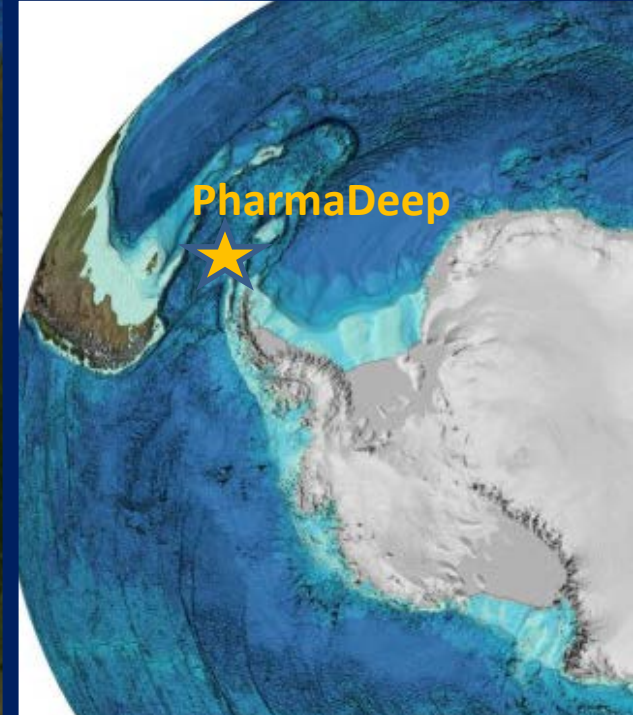
Number of participating institutions per country (non-European countries)



Total: 22 institutions from 12 countries

EUROFLEETS2 Granted Cruises

Next cruises to come following the Regional3 call evaluation

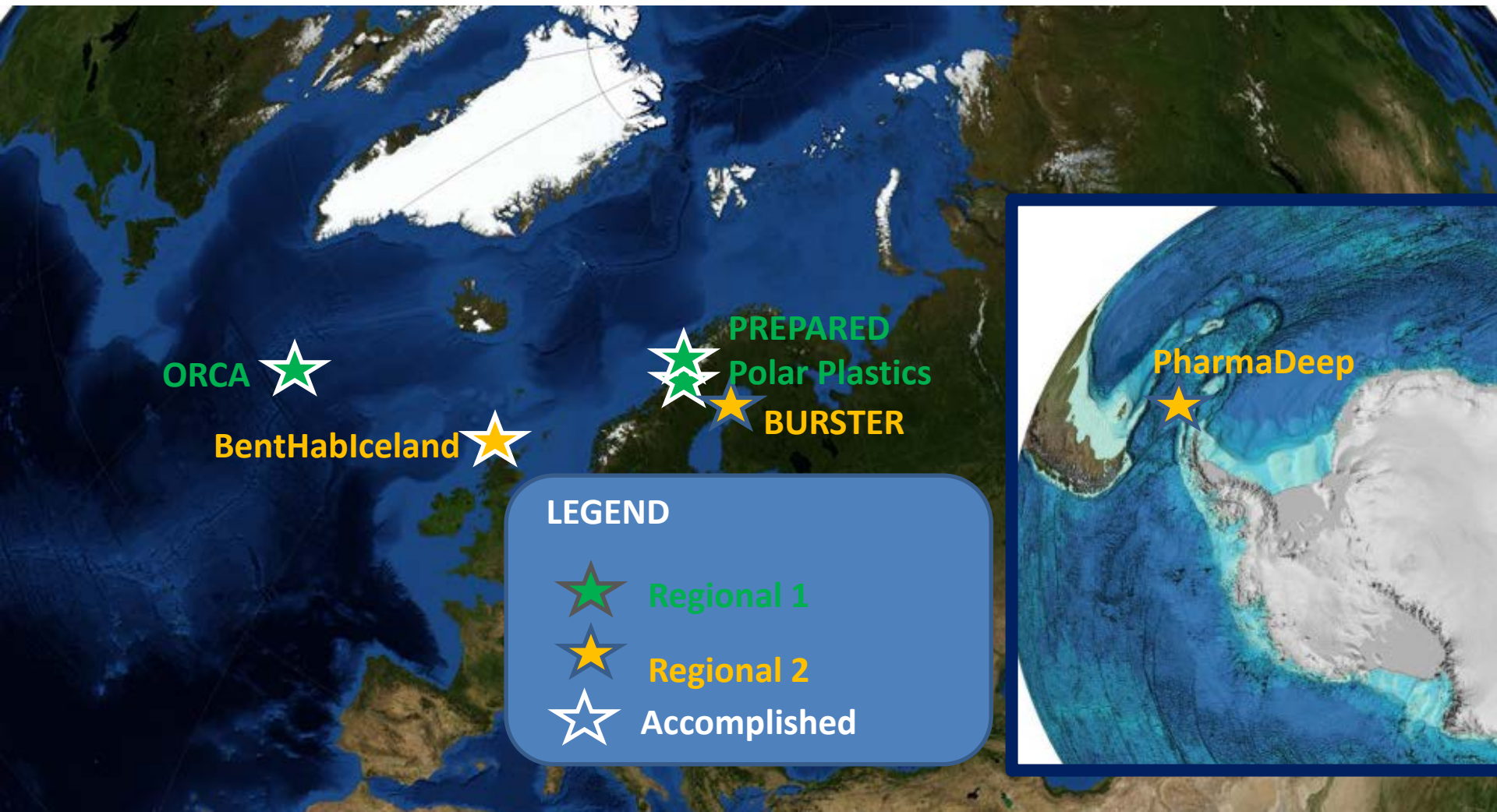


LEGEND

-  Regional 1
-  Regional 2
-  SI and EE
-  Accomplished

EUROFLEETS2 Polar and Subpolar Funded Cruises

EUROFLEETS2 funds a total of 6 research cruises in polar/subpolar regions



EF13_001 ORCA

RV Sanna (GINR, GL)

Geographic area: **Greenland**

PI: **Laura de Steur (NIOZ, NL)**

Cruise duration: **8 days**

Main discipline: **Physical
Oceanography**

Photos courtesy of Laura de Steur (NIOZ)



EF13_001 ORCA

Photos courtesy of Laura de Steur (NIOZ)

*“It was a great opportunity to carry out the ORCA project through EUROFLEETS2. Considering the fact there is limited availability of vessels for Arctic research it was fantastic to be able to use RV Sanna for work in the western Greenland fjords. Results are at present still being analysed however it can be stated that this data set that was collected is **unique in a kind**. This project will help us to understand the role of the ocean in the discharge of marine terminating glaciers in Greenland which are experiencing rapid change in the last decade”.*

Laura de Steur (NIOZ)



EF13_002 PREPARED

Photos courtesy of Renata Lucchi (OGS, IT)

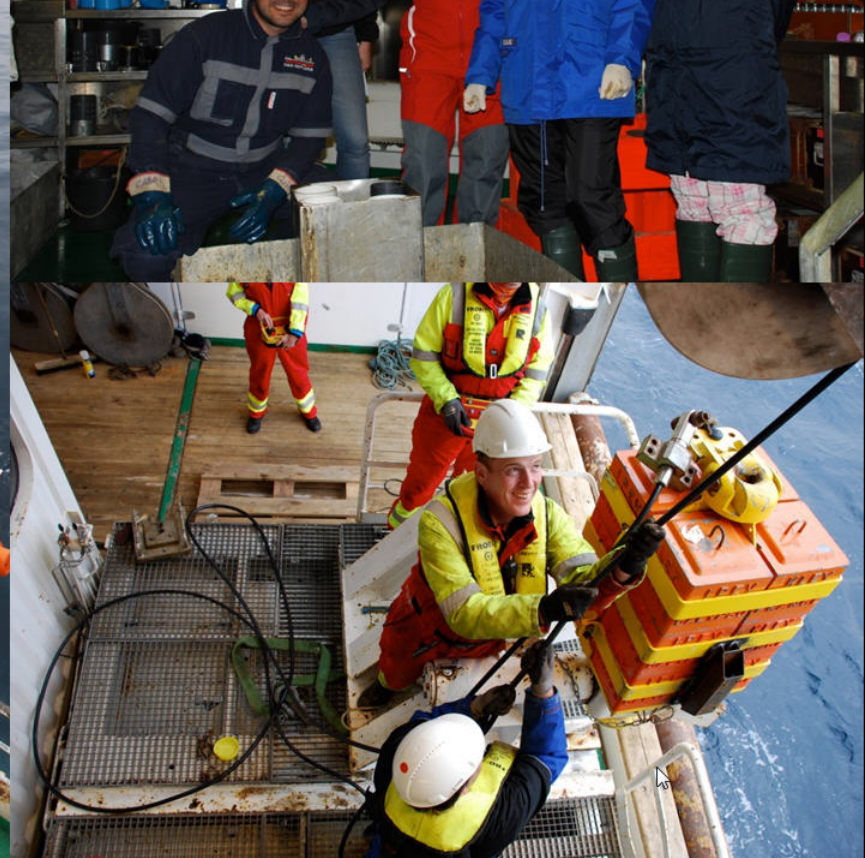
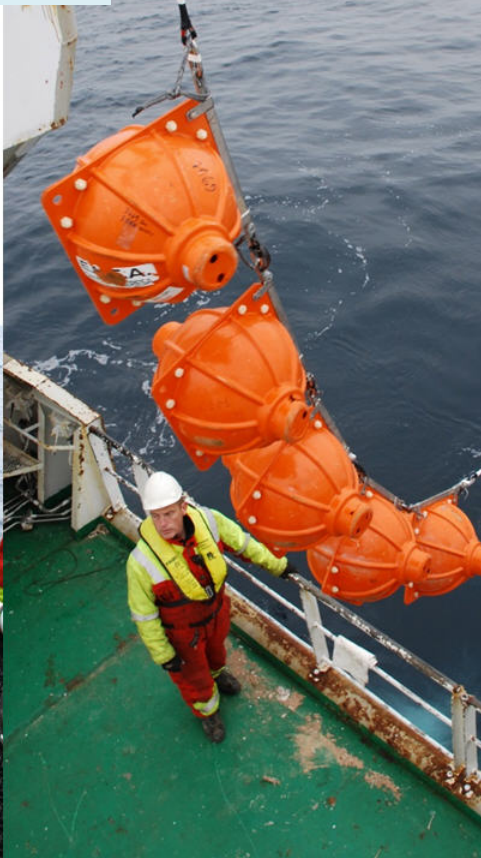
RV G.O. SARS (IMR, NO)

Geographic area: Svalbard

PI: Renata Lucchi (OGS, IT)

Cruise duration: 10 days (11 in all)

**Main discipline: Physical
Oceanography**



EF13_002 PREPARED

Photos courtesy of Renata Lucchi (OGS, IT)



*“I had the privilege to benefit of 10 days of ship time on the RV G.O. Sars in the NW Barents Sea. We collected a pool of **high-resolution and valuable geological, oceanographic and biological data set** from our study area that is presently under process.*

As coordinator of the project, I received an invaluable support from both the EUROFLEETS2 team and the RV G.O. Sars management office during the cruise preparation for logistics as well as administrative/bureaucratic duties necessary for the cruise.

***Eurofleets Program represents, in my opinion, an excellent tool in support to research** allowing investigators to access data collection through a choice of qualified research vessels. The significant expenses related to data acquisition are often not foreseen in the budget of individual research projects making often very difficult the possibility of accomplish the research itself”.*

Renata Lucchi, OGS

EF13_004 POLAR PLASTICS

Photos courtesy of Amy Lusher (MRFC, IE)

RV G.O. SARS (IMR, NO)

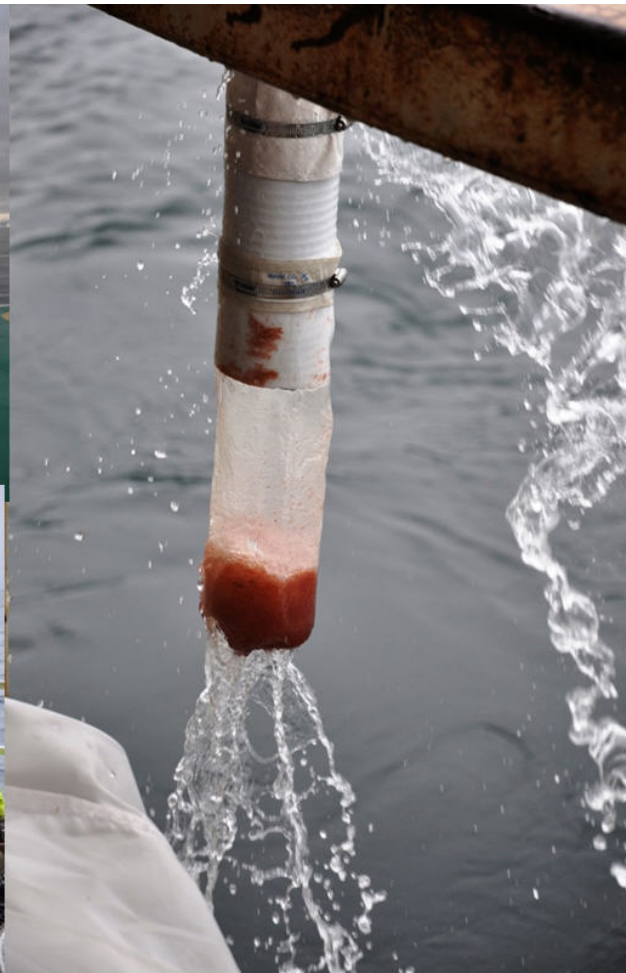
Geographic area: **Svalbard**

PI: **Amy Lusher (MRFC, IE)**

Cruise duration: **1 day (11 in all) /together with cruise**

PREPARED

Main discipline: **Physical Oceanography**



EF13_004 POLAR PLASTICS

Photos courtesy of Amy Lusher (MRFC, IE)

*“Participating in EUROFLEETS2 was an amazing experience, this cruise gave me the opportunity **to carry out my PhD research**, meet some brilliant researchers and form future collaborations”.*

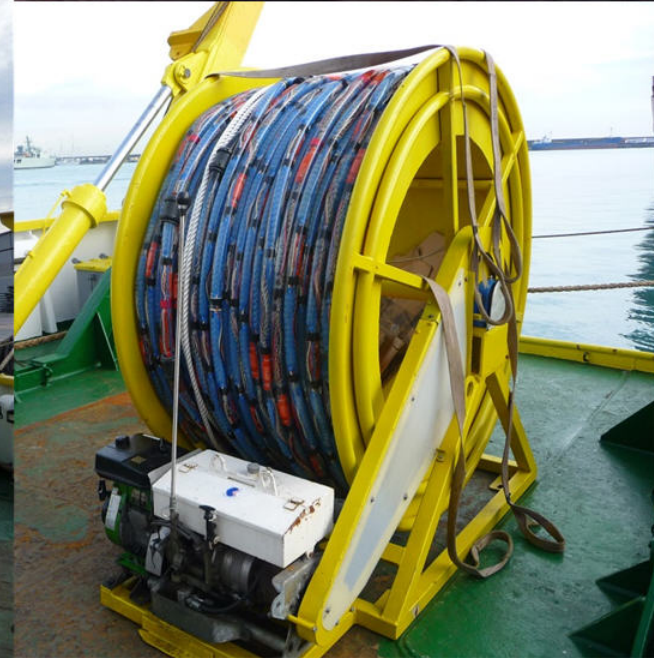
Amy Lusher (MRFC, IE)



EF2 SI_005 MED-SUV.ISES

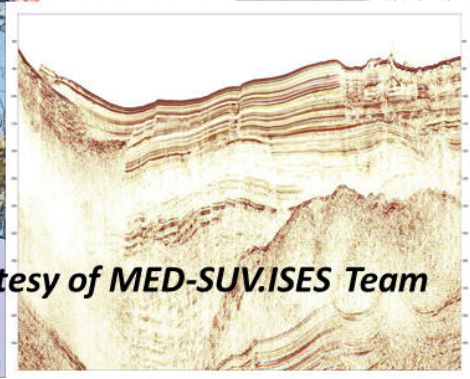
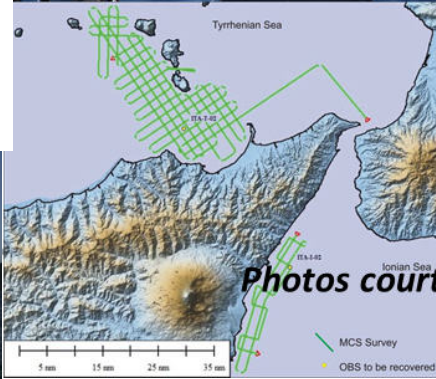
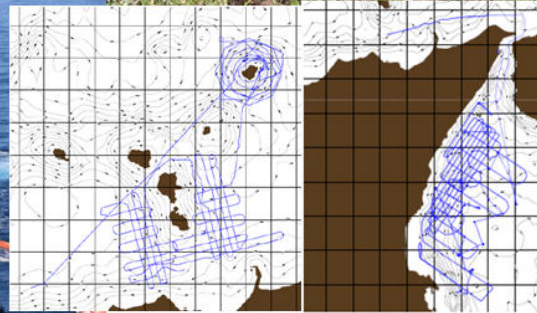
RV Sarmiento de Gamboa (CSIC, ES), 5+10 days
RV Aegaeo (HCMR, GR), 13 days
Geographic area: Sicily
PI: Giuseppe Puglisi (INGV, IT)
Cruise duration: 28 days in all
Main disciplines: Geophysics, New technologies
and training

Photos courtesy of MED-SUV.ISES Team



EF2 SI 005 MED-SUV.ISES: a 3-leg cruise coordinated with other scientific activities

- Cruise 1 on RV Sarmiento de Gamboa for OBS deployment. In parallel with other OBS deployment and data collection from the Italian Naval Hydrographic Vessel Galatea, and **with terrestrial activities**
- Cruise 2 (June –July 2014) on RV Sarmiento de Gamboa with seismic refraction experiment in the Tyrrhenian and Ionian Seas. High resolution bathymetry data acquired also
- Cruise 3 (November 2014) on RV Aegaeo for OBS recovery and acquisition of high resolution seismic profiles in the Tyrrhenian and Ionian Seas



Photos courtesy of MED-SUV.ISES Team

EF2 SI_005 MED-SUV.ISES

Photos courtesy of MED-SUV.ISES Team

" The use of the vessels offered in the framework of the EUROFLEETS2 call was crucial for achieving one of the main objectives of the MED-SUV project.

*The data collected off-shore of Mt. Etna volcano and northern Sicily provided a large amount of **qualified data for seismologists, geophysicists, volcanologists and geologists** to improve the knowledge of the roots of this volcano, its internal processes as well as the crust of the eastern Sicily".*

Giuseppe Puglisi (INGV, IT)



Towards a 3rd initiative to start in 2018 with a strong TNA component?

- The EC consultation process for the submission of a proposal in 2017 will start soon
- 2016: a full year to prepare the next step

All ideas are welcome! Should you be interested in joining the initiative, please contact eurofleets2@ifremer.fr





Thank you for your attention

