

# Studies about Upgrade of R/V Thalassa



# Upgrade of R/V Thalassa

- Upgrade of R/V Thalassa is included in the global plan about modernisation of French Oceanographic Fleet. Nowadays, Thalassa is almost dedicated to Fisheries stock assessment cruises and physical Oceanography cruises. The aim of this studies is to expand her surveys to bathymetric and coring surveys.
- **Initial schedule :**
  - Feasibility studies in 2014
  - Detailed studies in 2015
  - 2015-2016
  - Works mid-2017
- **Budget :**
  - About 13 M€



# Upgrade of Thalassa

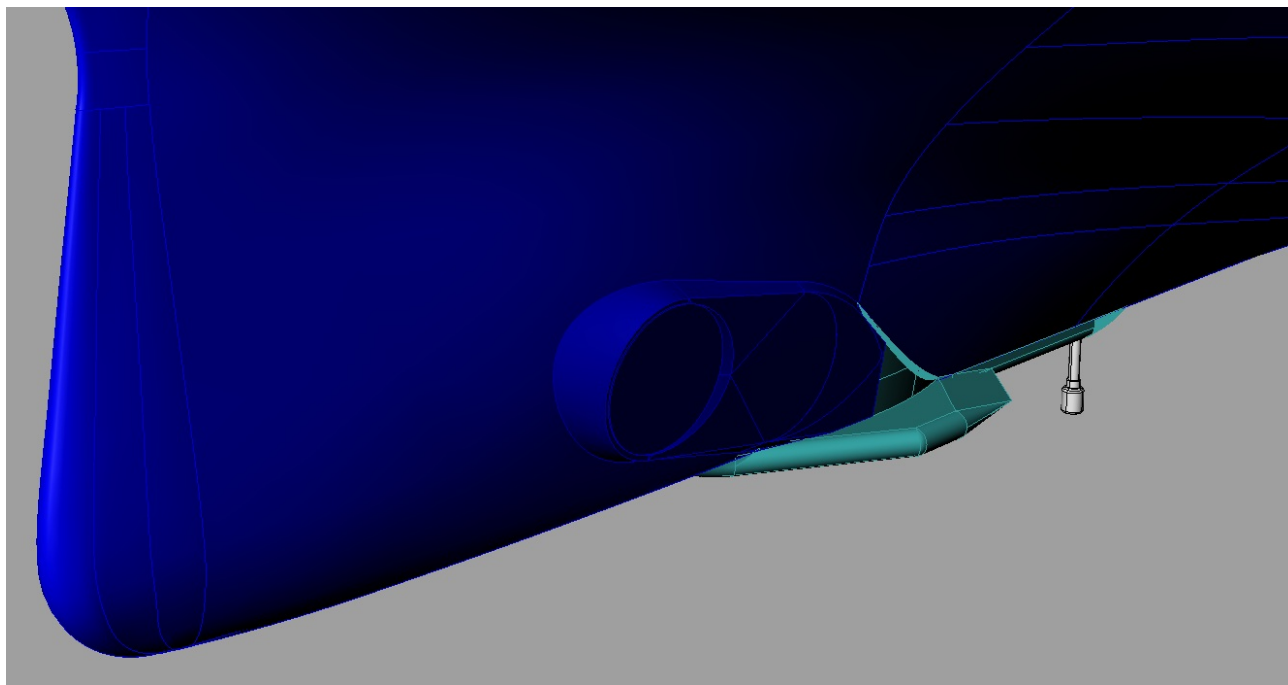
- **Feasability studies started in July 2014**
- **Aims**
  - Define limits of project feasibilities while keeping actual surveys (fishery and geophysic science)
  - Define maintenance works to extend live of this vessel 20 years more
  - Determinate budget and detailed schedule
- **Studies**
  - Setting up of bathymetric multibeam echosounders for short and deep water
  - Setting up a gravimeter
  - Setting up a solution for 15 meters corer minimum
  - Refunding of laboratories and sounders room
  - Maintenance works (accomodations, labs, Electric propulsion control system...)
  - Works to go under to ICES209 curve

# News sounders

- **New sounders**
  - EM122 2°x2° ou EM302 0.5°x1°
  - EM2040 0.4°x0.7
  - Sound Bottom Profilers Echo3500
  - Sonar SX90 ?
- **Existing sounders**
  - ADCP 38 kHz and 150 kHz
  - Multi beam echosounders ME70
  - Single beam echo sounders EK60 18 kHz, 38 kHz, 70 kHz, 120 kHz, 200 kHz and 333 kHz

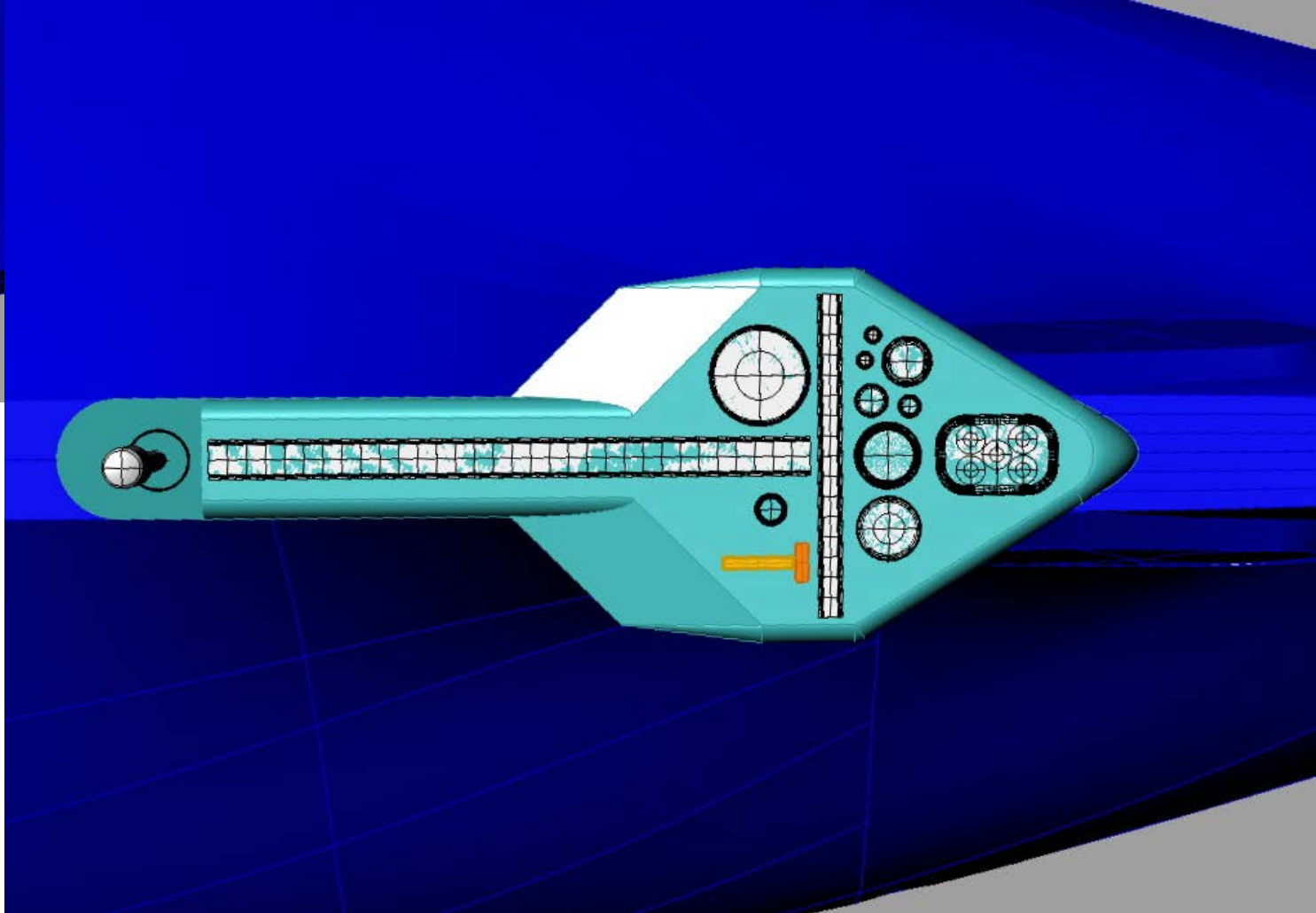
# News sounders

Ifremer

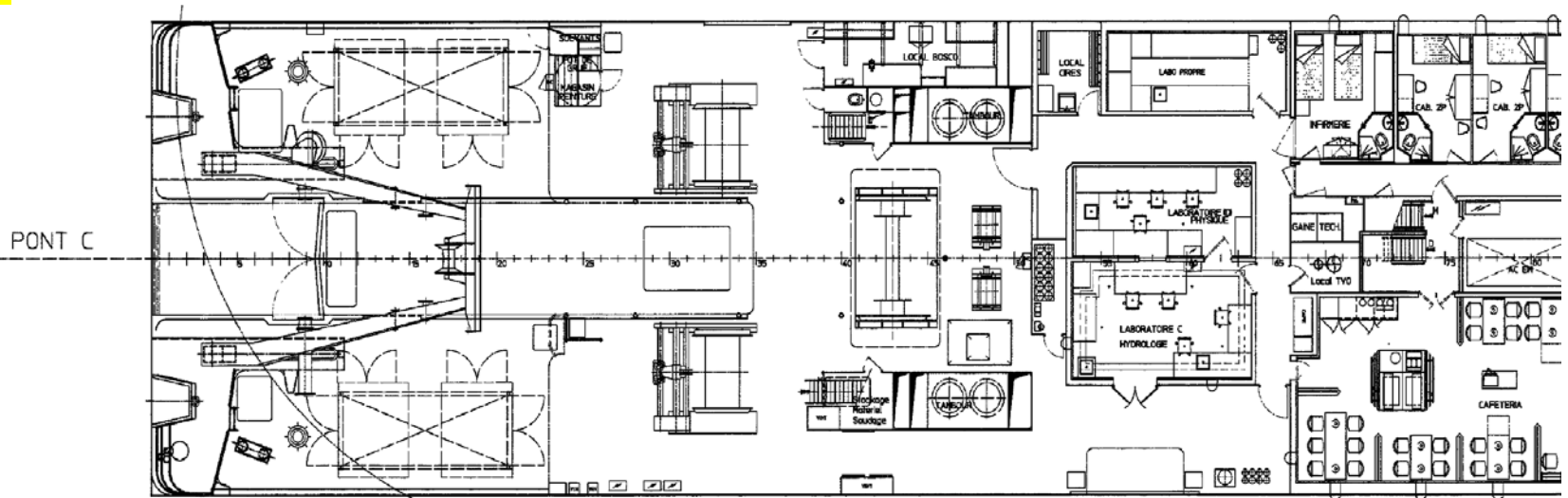


# News sounders

ifremer

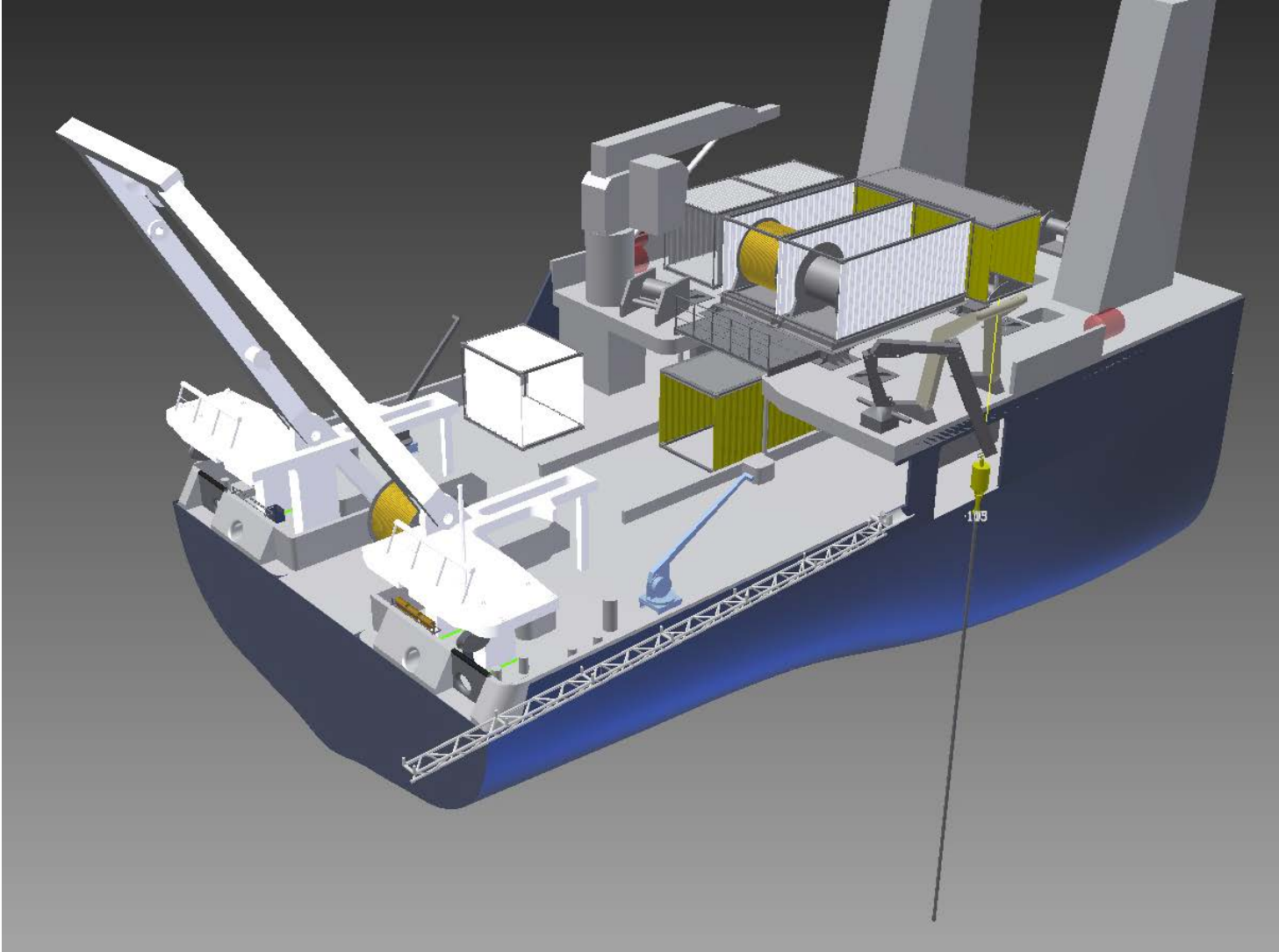


# Coring function



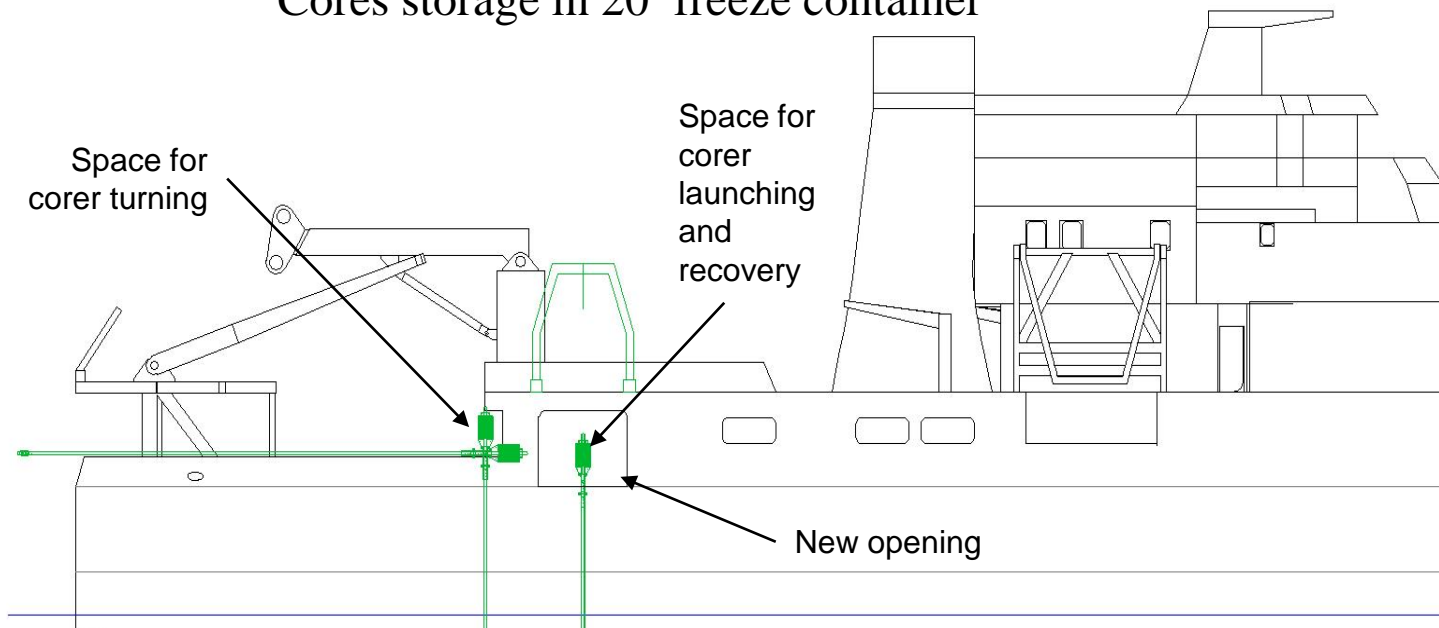
# Coring function studies

Ifremer



# Coring function studies

- **Pont D** : crane and/or A-frame for coring,  
winch in a 20' container
- **Pont C** : space for prepare and cut the core,  
Space for core inspection  
Cores storage in 20' freeze container

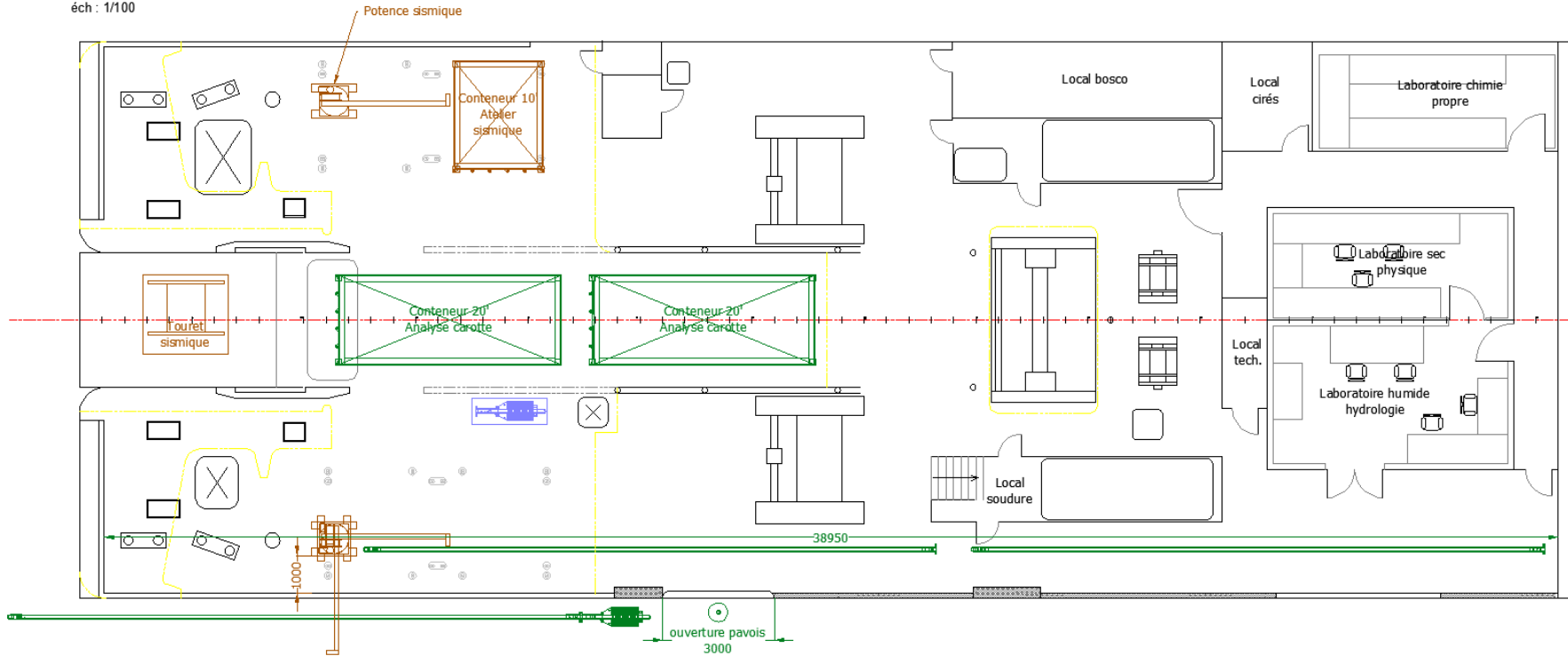


# Coring function studies

## Pont C

THALASSA - pont C

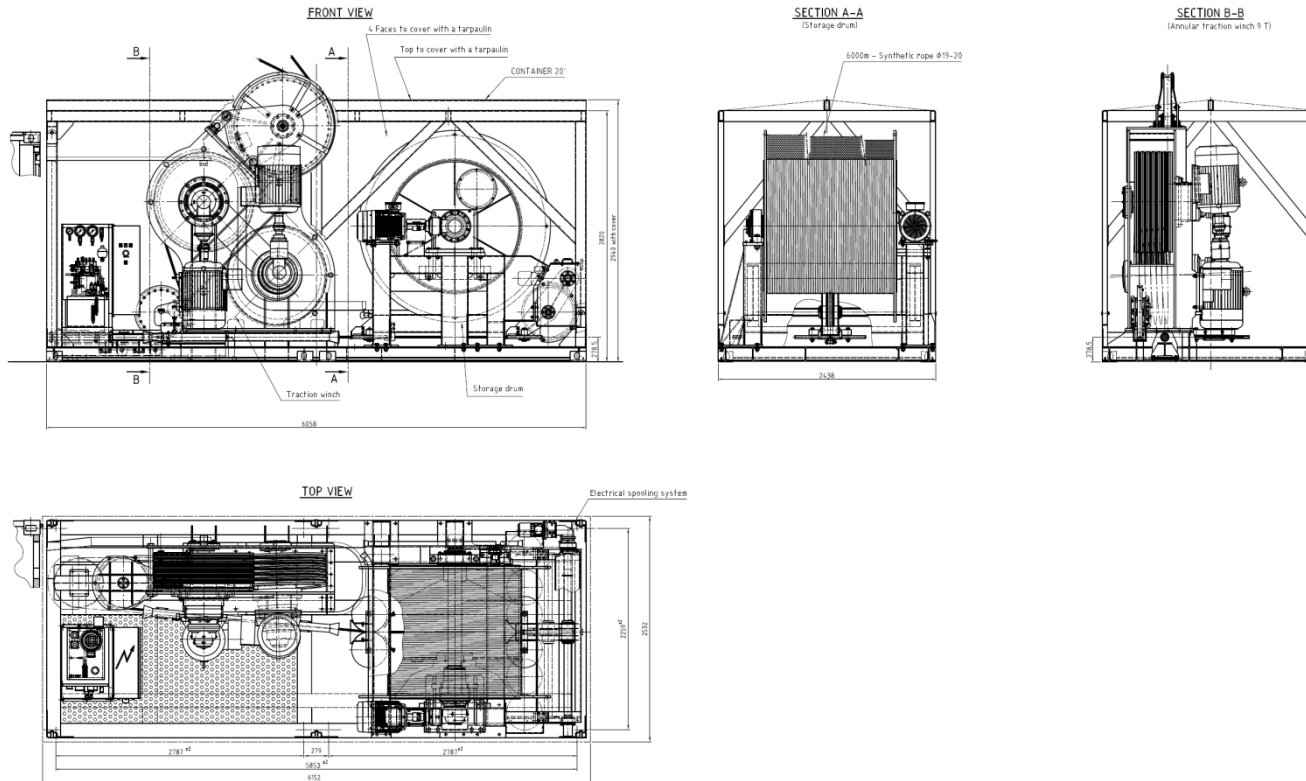
éch : 1/100



# Coring function studies

## Example of winch into 20' container

- 20' container 20' (winch + capstan) + 10' container (power + control)
- 6000 m of synthetic cable (diam 19 mm, MBL 25 T) with 80 kN @45m/min or 35 kN@100m/min



Thank you for your attention

