



# DATA ACQUISITION AND PROCESSING TEAM OVERVIEW


Ian Hawkes | DAP Team Leader

*RV Investigator* – a new era in marine and atmospheric research for Australian scientists



# DAP Team - Overview

Marine National Facility

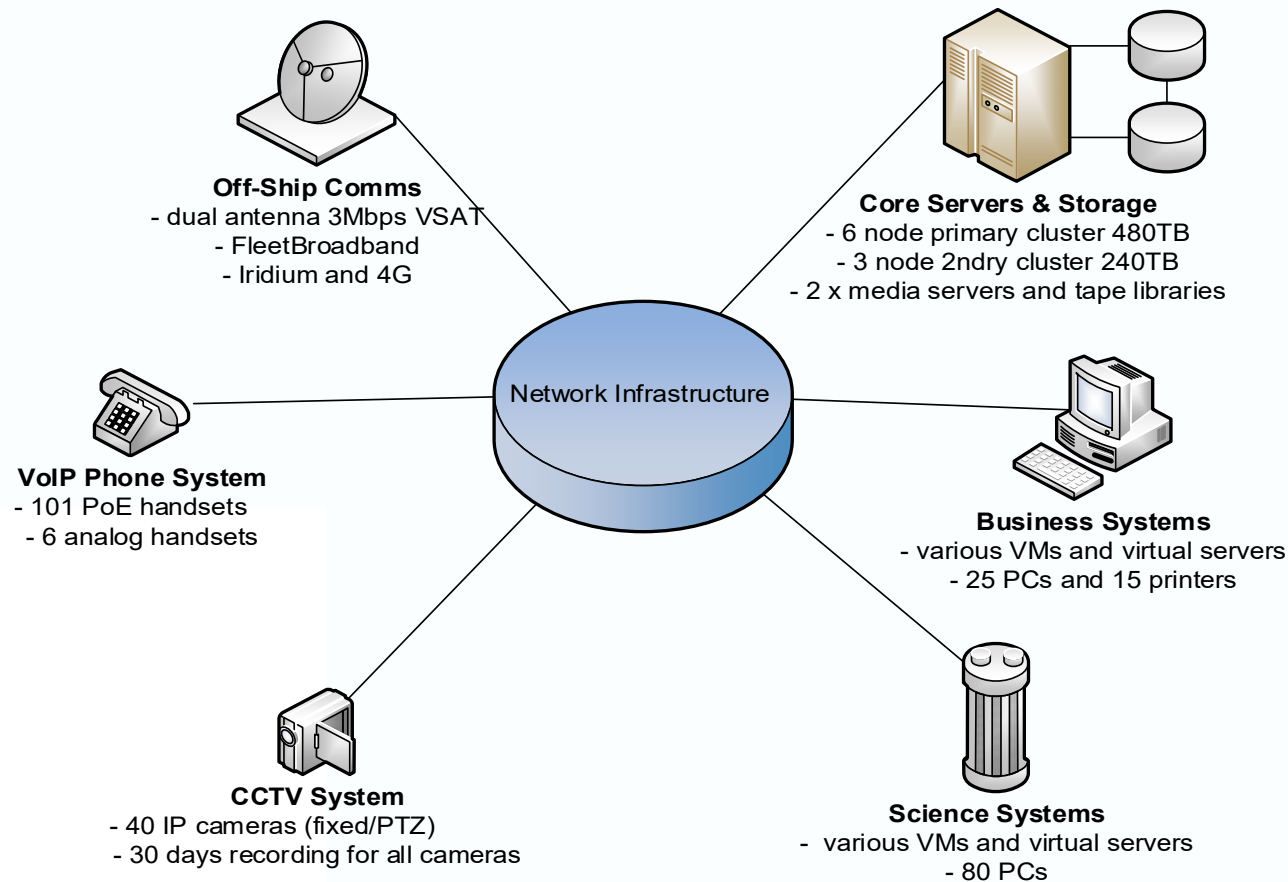


|                       |
|-----------------------|
| Who are the DAP team? |
| What are our roles?   |
| Contact Details       |
| Questions             |
|                       |
|                       |
|                       |

# RV INVESTIGATOR – DAP Team Roles

Marine National Facility

- Managing the Ship's IT and Communication systems network



# RV INVESTIGATOR – DAP Team Roles

Marine National Facility

- General Seagoing Support
  - Assisting scientists & crew with network connection & general IT issues
  - Running Uwy data acquisition system, ensuring quality data is archived and delivered to shore
  - Handling data requests
  - Preliminary processing to ensure data quality & for use by scientists at sea
  - Managing media events involving live video streaming
  - Supporting standard IT system services (email, internet, printing, backups etc)

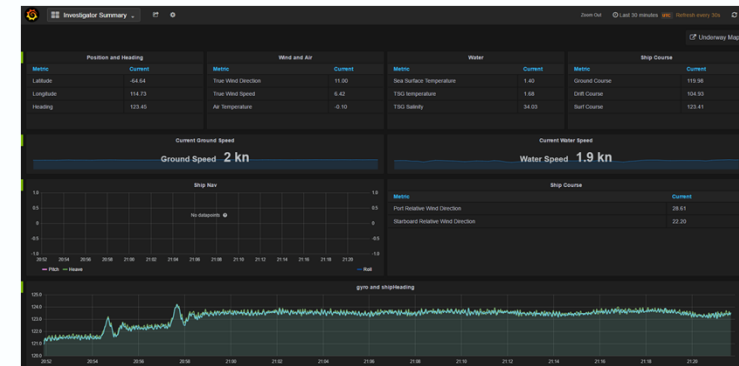


# RV INVESTIGATOR – DAP Team Roles

Marine National Facility

## Software Development and Maintenance

- TECHSAS
  - Underway data acquisition system
- CAPPPro
  - CTD and Triaxus Processing
- Grafana/Influx
  - Real-time web-based data viewing
- Delta
  - Scientific data aggregation and storage tool
- Uwy Merger
  - Underway data interpolation
- Winch Server
  - Interface to Rapp Hydema winch software

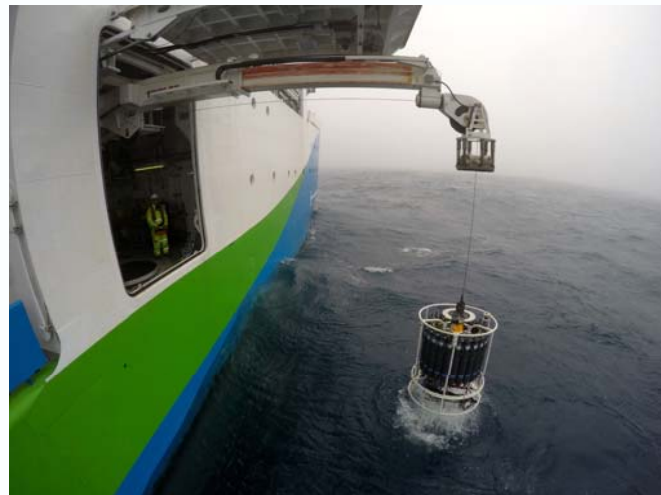


| Select | JOB ID  | STATE   | SOURCE                                     | DESTINATIONS   | LAST TRANSFER DETAILS                              | PERIOD (H:M:S) | MODE          |
|--------|---------|---------|--|--|--|----------------|---------------|
|        | JOB_49  | PENDING | 09S-gpt ELOO<br>Nep-gptELOO                | 1. ELOO current merge<br>= Path: /home/roger/Current/ELOO<br>= Size: 22.28 KB  | 1. 1 file copied - 15.51 KB                        | 0.5            | 00:00:24 COPY |
|        | JOB_101 | PENDING | underway merger data<br>underwaymergerdata | 1. underway merger data current<br>= Path: /home/roger/Current/underway<br>= Size: 100 KB<br>= Size: 100 KB  | 1. 1 file copied - 96.07 KB                        | 0.5            | 00:07:35 COPY |
|        | JOB_110 | PENDING | UNDCAS data<br>%undcasdata                 | 1. UNDCAS current data<br>= Path: /home/roger/Current/undcas<br>= Size: 7.62 KB  | 1. 151 files copied - 365.16 KB                    | 1.0            | 00:09:36 COPY |
|        | JOB_41  | PENDING | PCO2<br>1165-229-223-130out                | 1. current merge PCO2<br>= Path: /home/roger/Current/PCO2<br>= Size: 1.15 MB<br>2. PCO2 merge<br>= Path: /home/roger/Current/PCO2<br>= Size: 1.15 MB | 1. 0 files copied - 0 B<br>2. 0 files copied - 0 B | 0.5            | 00:12:23 COPY |
|        | JOB_7   | PENDING | cap count<br>%CTDDataCurrentCAP            | 1. current merge cap count<br>= Path: /home/roger/Current/CAP<br>= Size: 16 KB   | 1. 0 files copied - 0 B                            | 1.0            | 00:24:26 COPY |
|        | JOB_10  | PENDING | techsas<br>TechsasData                     | 1. current merge techsas<br>= Path: /home/roger/Current/Techsas<br>= Size: 11.84 KB  | 1. 58 files copied - 1.1 KB                        | 1.0            | 00:24:23 COPY |
|        | JOB_41  | PENDING | techsas2<br>Techsas2Data                   | 1. techsas2 current merge<br>= Path: /home/roger/Current/Techsas2<br>= Size: 2.94 KB   | 1. 58 files copied - 1.09 KB                       | 1.0            | 00:24:24 COPY |

# RV INVESTIGATOR – DAP Team Roles

Marine National Facility

- Data Processing and Quality Control of
  - Underway
  - CTD
  - Triaxus
  - ADCP data
- Delivery of processed data products to the Data Centre onshore



# RV INVESTIGATOR – Summary

Marine National Facility

## We don't just fix people's IT problems:

- We develop, support & manage a large number of systems & software to enable effective science at sea. We evolve these systems to make them better.
- We are responsible for running the ship's underway data acquisition system, ensuring good quality data is collected & brought safely home.
- We process various datasets, develop & maintain associated tools, & deliver QCd data products to the Data Centre for the end users.

# RV INVESTIGATOR – DAP Contact Details

Marine National Facility

Ian Hawkes  
DAP Team Leader  
CSIRO Oceans and Atmosphere  
[ian.hawkes@csiro.au](mailto:ian.hawkes@csiro.au)





# Thankyou Questions?

