

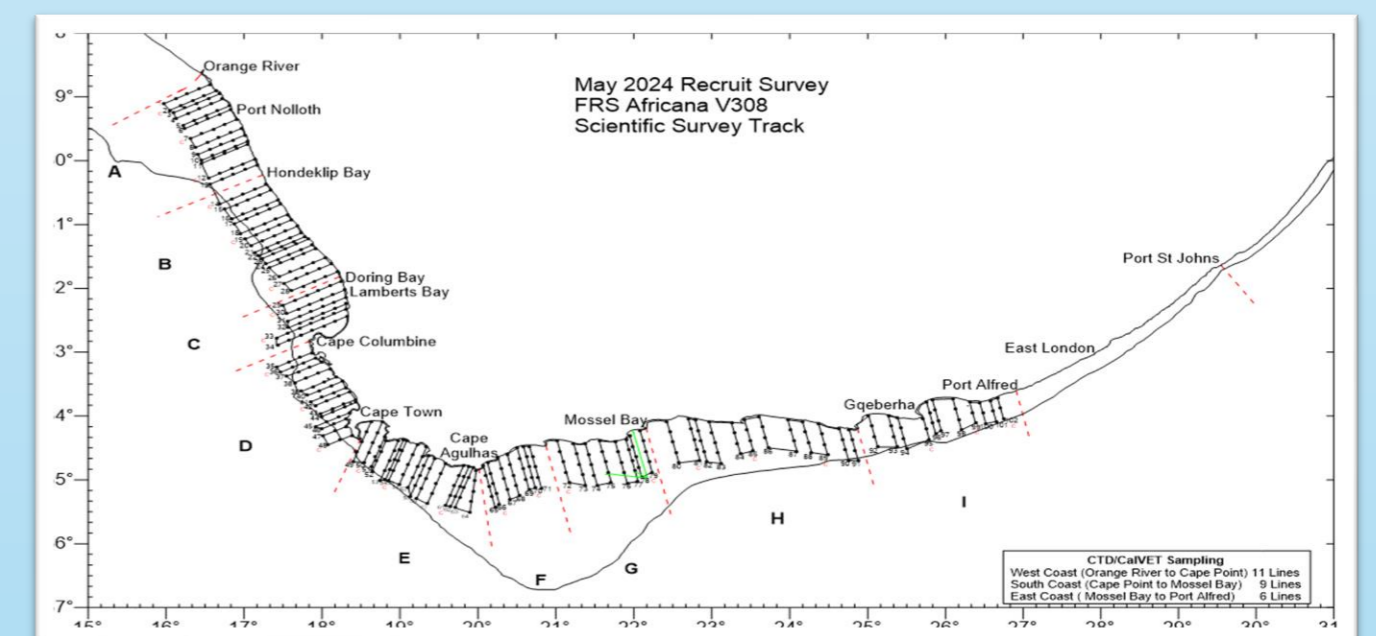
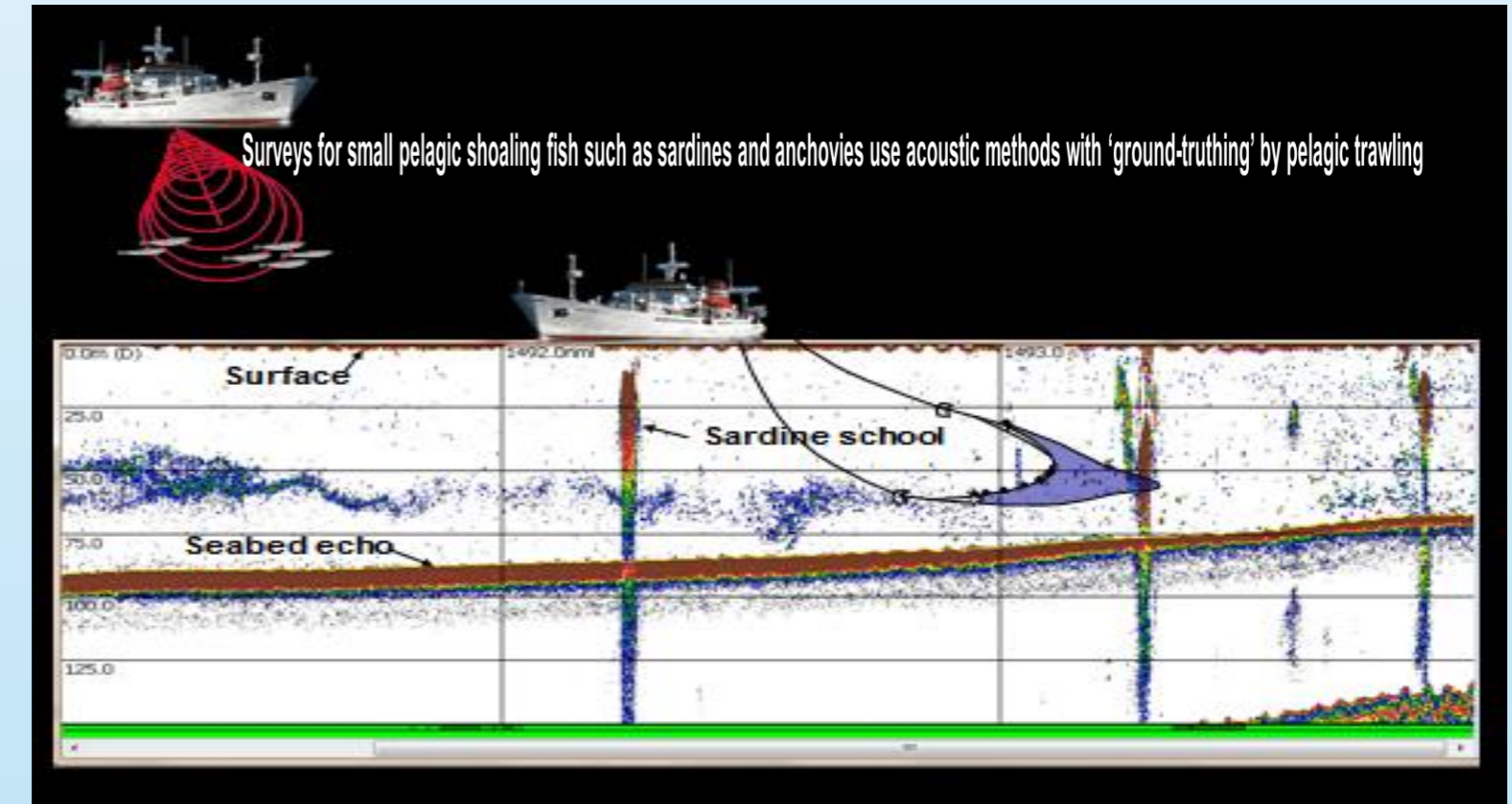
Research vessels used by the Department Forestry, Fisheries and the Environment.

RV AFRICANA

Length: 70m
 Displacement: 2471 tons
 Endurance: 45 days at sea
 Range: 20000 nautical miles
 Compliment: 34 Officers and crew + 18 Scientists

Pelagic Fish Surveys:

Two pelagic surveys are conducted per year. The first is the Recruit survey that calculates the recruitment success of the previous year, The second is the Spawner Biomass survey that calculates the total pelagic biomass from which the TAC's are derived



ENVIRONMENTAL INFORMATION

DEMERSAL SURVEYS

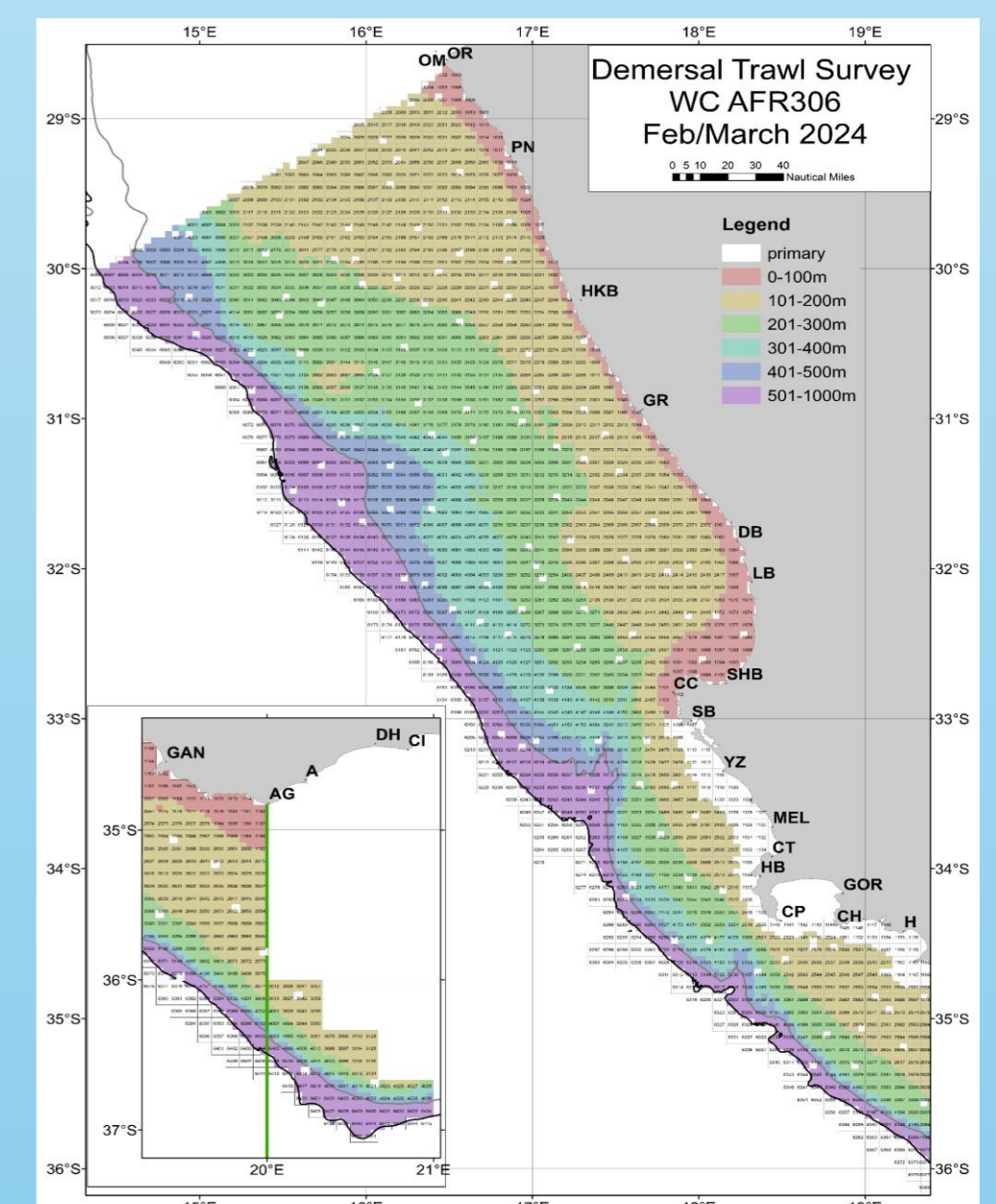
During the fish surveys, environmental data is also collected which aids in the interpretation of the fish information and understanding of ecosystem dynamics



Bottom trawl surveys are used to survey bottom-dwelling or demersal fish, including:

- Deep-water hake
- Shallow-water hake
- Monkfish
- Kingklip
- Sole
- Squid
- And many others

Two surveys are conducted annually. One survey covers the West coast of South Africa and the other the South and part of the East coast. The results of the surveys are used in the operational management procedure for the demersal industry.



RV ELLEN KHUZWAYO

Length: 43m
 Displacement: 883 tons
 Endurance: 14 days at sea
 Range: 2500 nautical miles
 Compliment: 13 Officers and crew + 8 Scientists

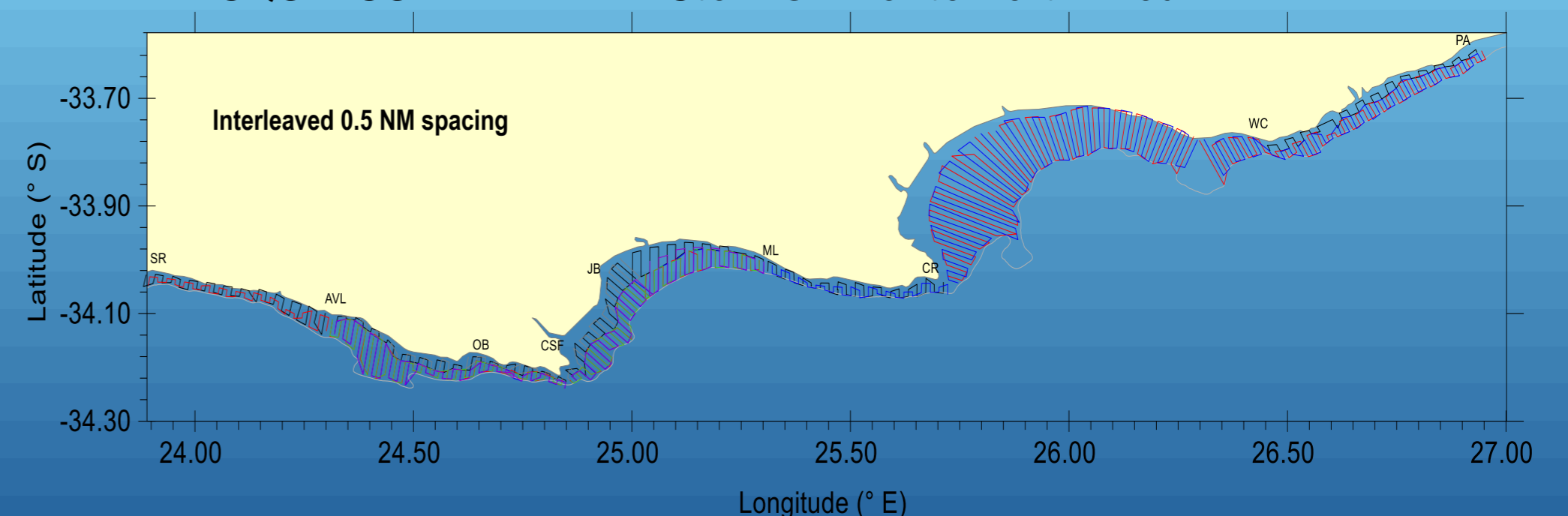


The RV *Ellen Khuzwayo* is a multi-disciplinary inshore research vessel. The vessel is currently mostly used for West Coast Rock Lobster surveys. She is also used for inshore acoustic surveys during the squid closed season. The vessel is also used for environmental studies.



Environmental Work and working with small research and commercial vessels

SQUID SURVEY AREA: Storms River to Port Alfred



Inshore survey area: 30 - 15 m depth

- RV *Abyss*, 7.5 m RIB equipped with SIMRAD EK60 38 and 200 kHz Split Beam Echo Sounders.
- 166 Survey Lines – approx. 360 NM (excluding transits)

Offshore survey area : 100/50 - 30 m depth

- RV *Ellen Khuzwayo* 43.2 m Fisheries Research Vessel Equipped with SIMRAD EK60 Split Beam Echo Sounders operating at 38, 120 and 200 kHz.
- 403 Survey Lines – approx. 1 470 NM (excluding transits)

Ref: Soule 2023; Mwigigi 2023