









R/V Dra. BARBIERI

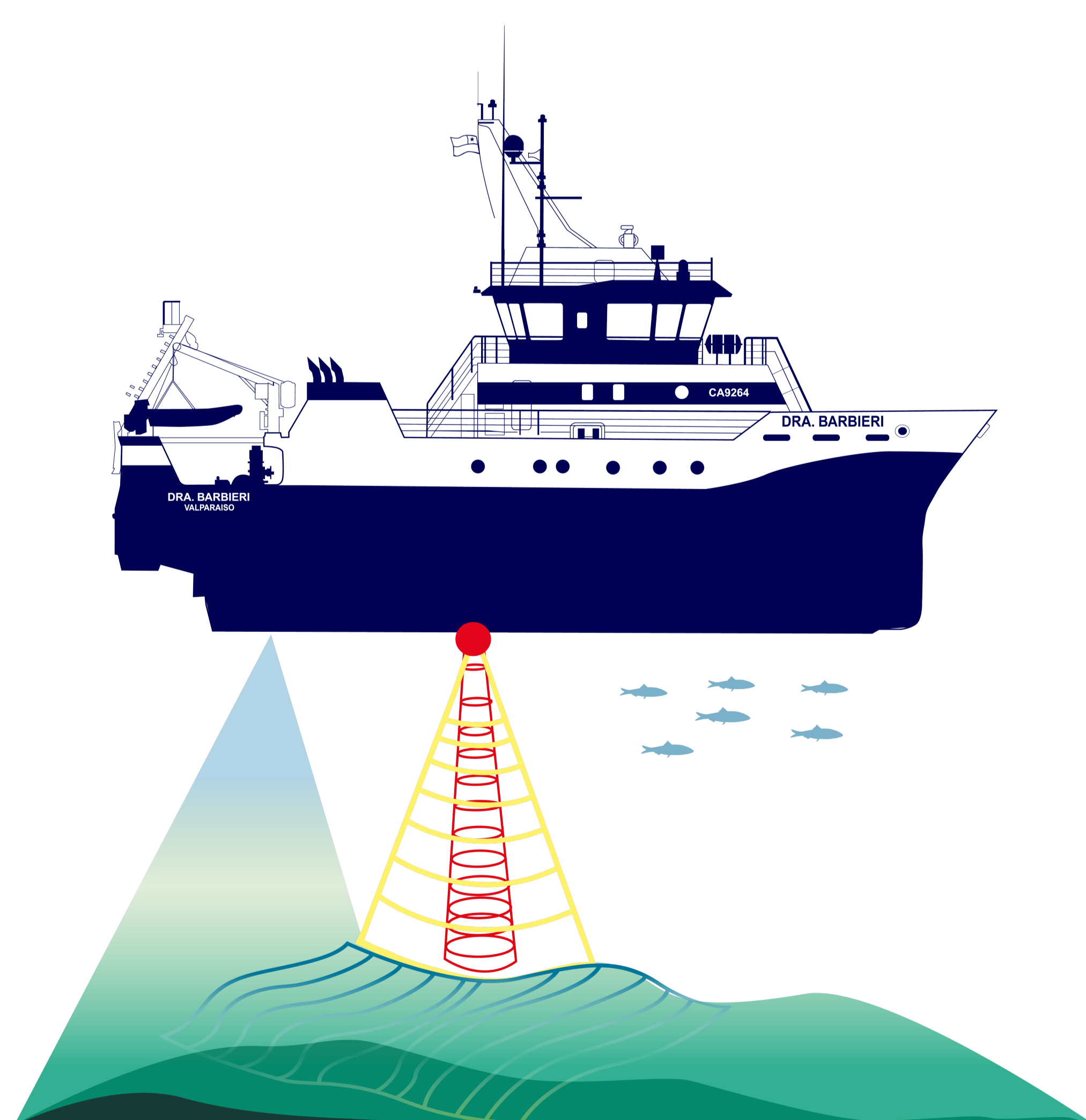
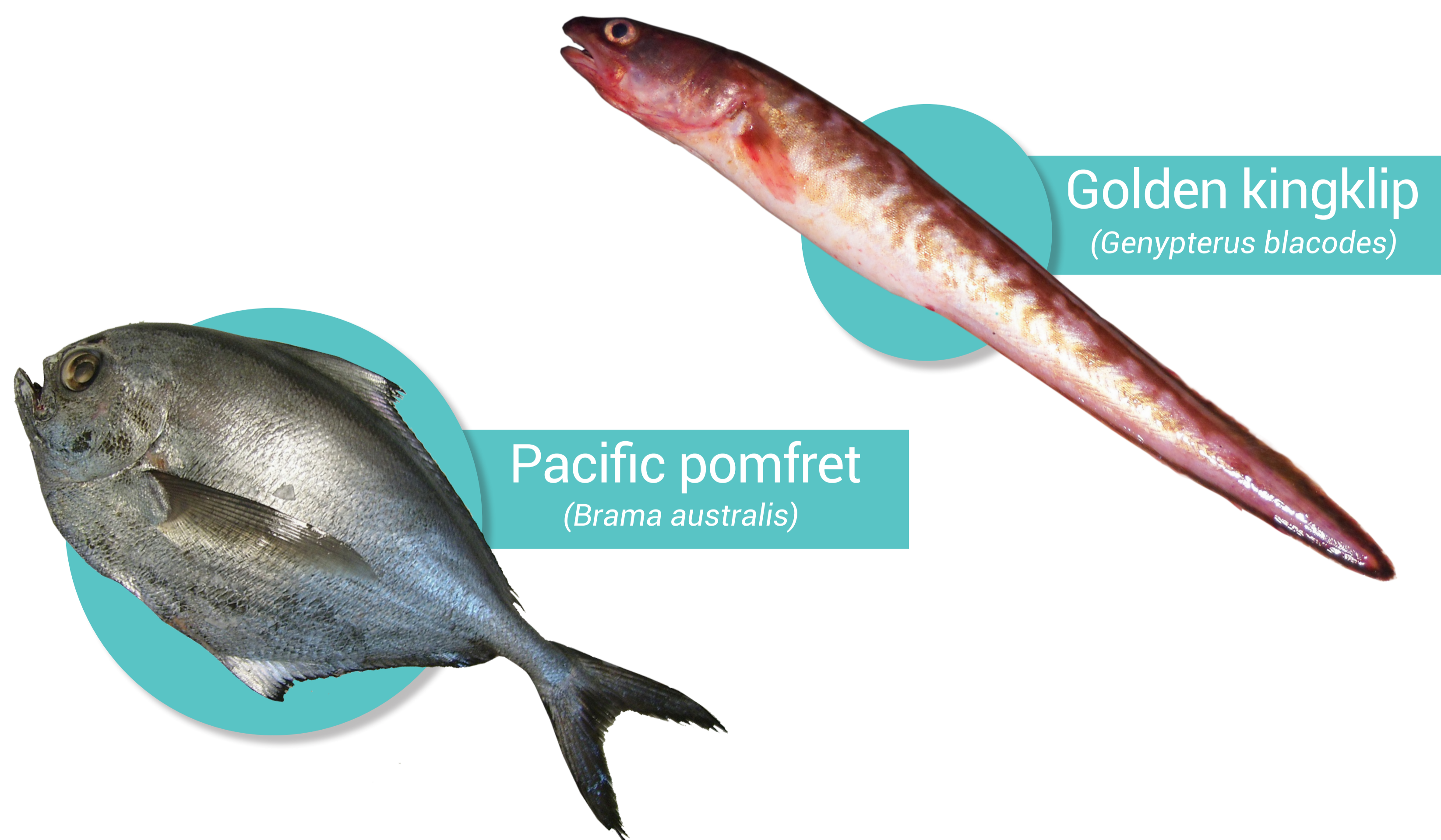
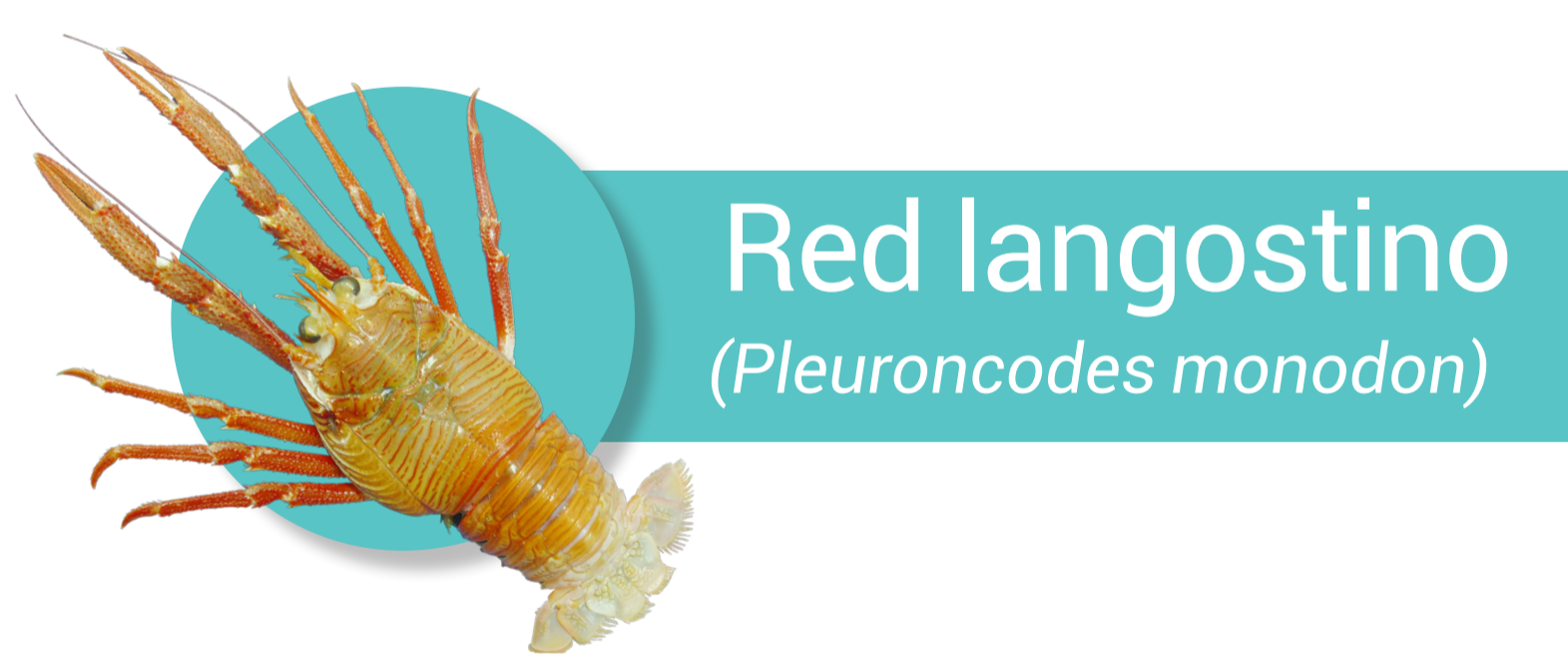
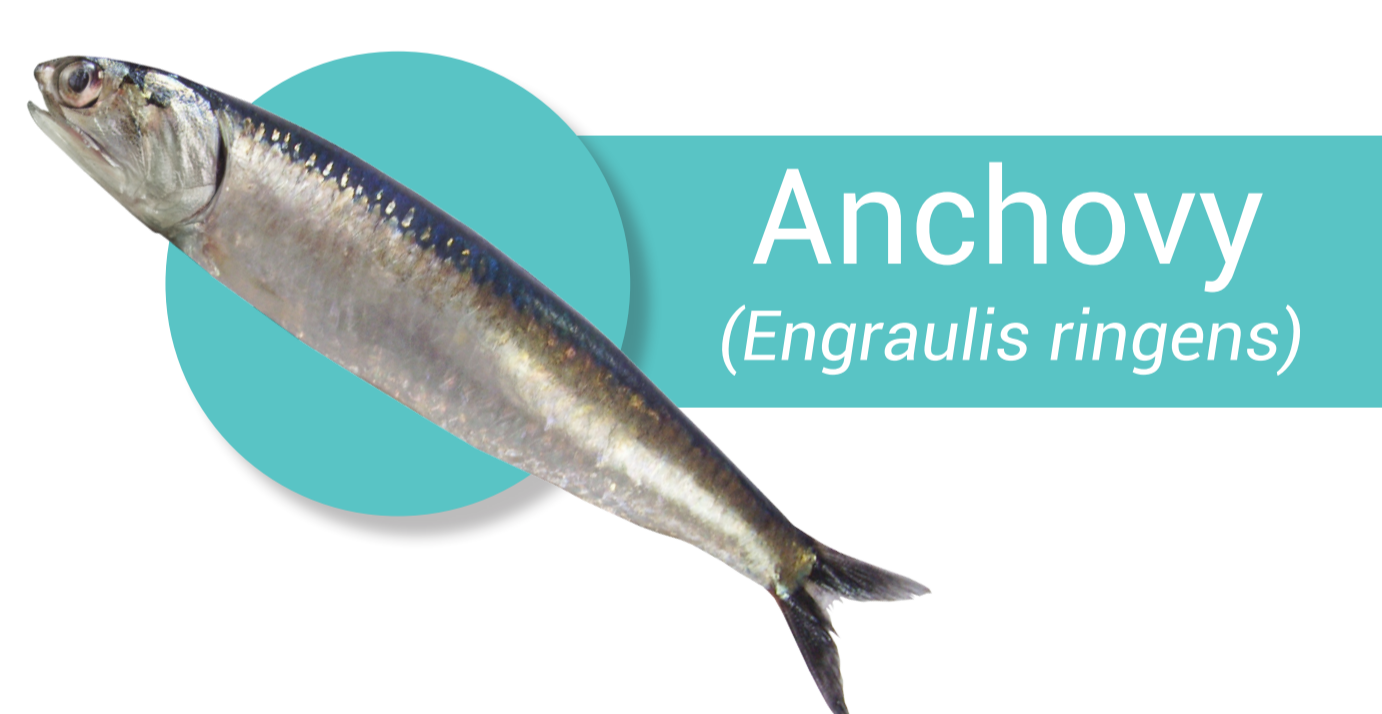
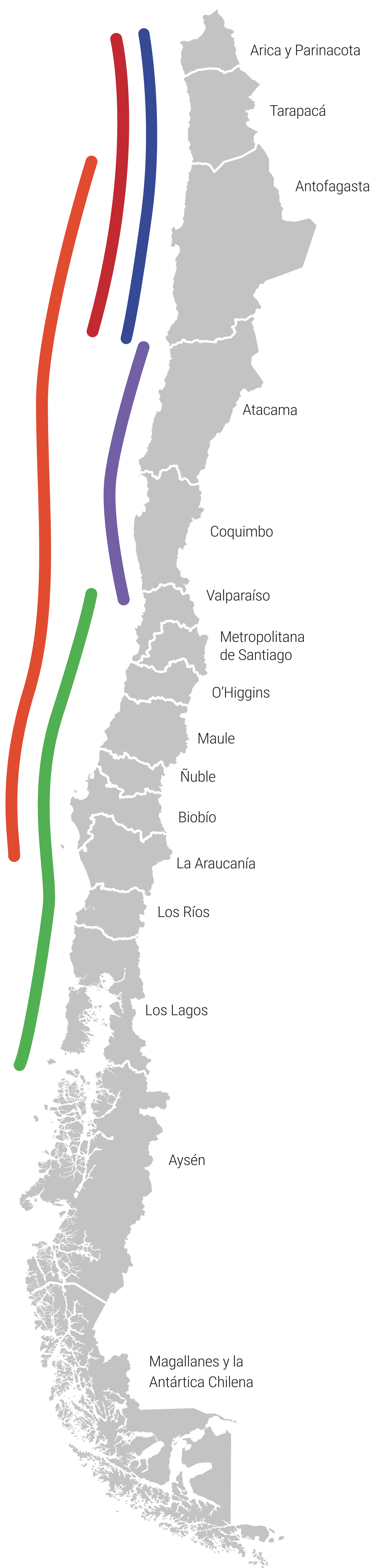
PROYECTED SURVEYS 2024

150 
Days of operation

5 
Surveys

ANNUAL

-  Evaluation of the spawning stock of anchovy between the Atacama and Coquimbo regions of Chile.
-  Evaluation of the spawning stock of anchovy and common sardine between the Valparaíso and Los Lagos regions of Chile.
-  Hydroacoustic evaluation of anchovy recruitment between the Arica y Parinacota and Antofagasta regions of Chile.
-  Monitoring of bio-oceanographic conditions and evaluation of the anchovy spawning stock between the Arica y Parinacota and Antofagasta regions of Chile.
-  Direct evaluation of yellow langostino, red langostino and shrimp between the Antofagasta and Biobío regions of Chile.



www.ifop.cl

INSTITUTO DE FOMENTO PESQUERO



R/V ABATE MOLINA

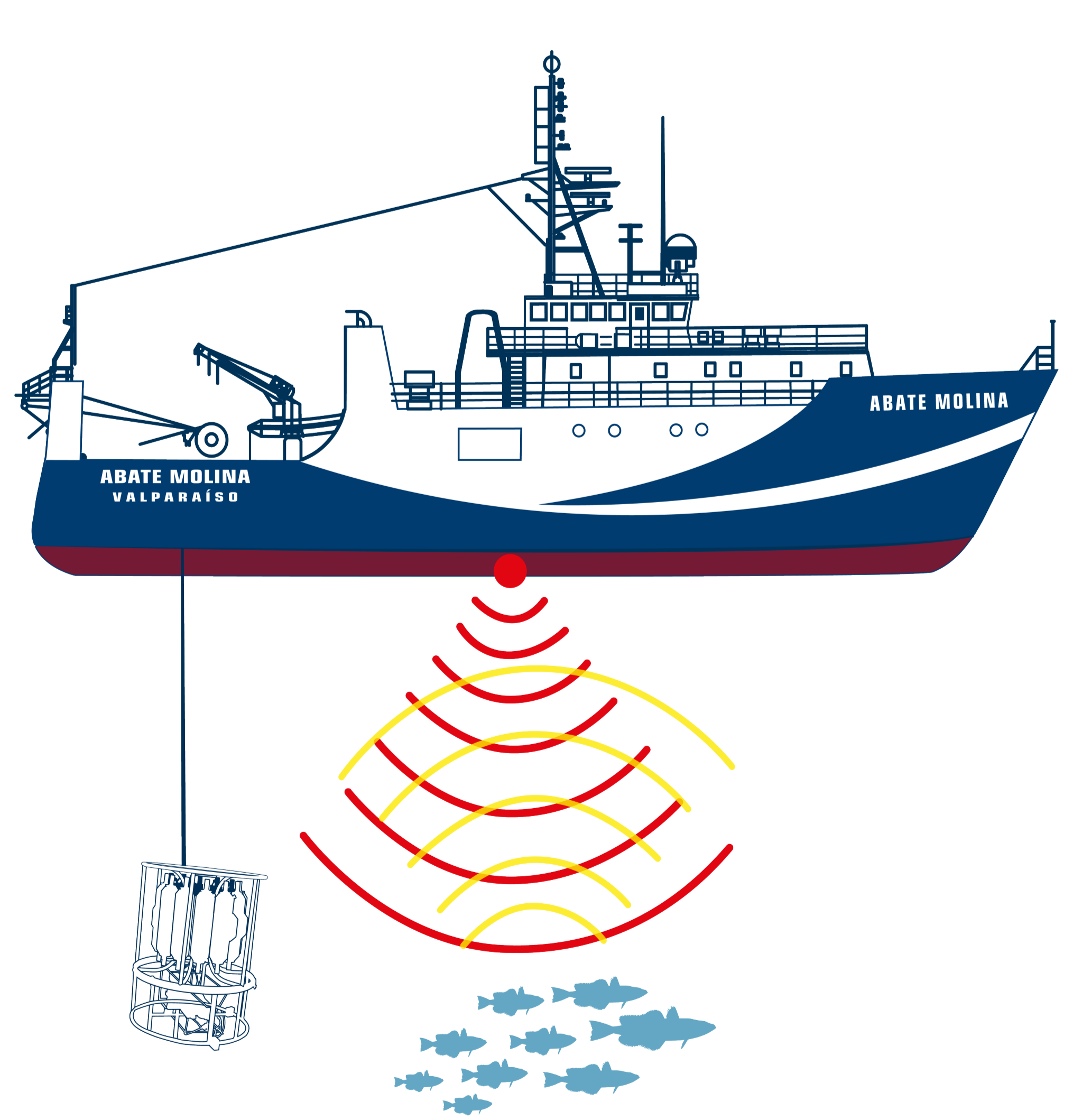
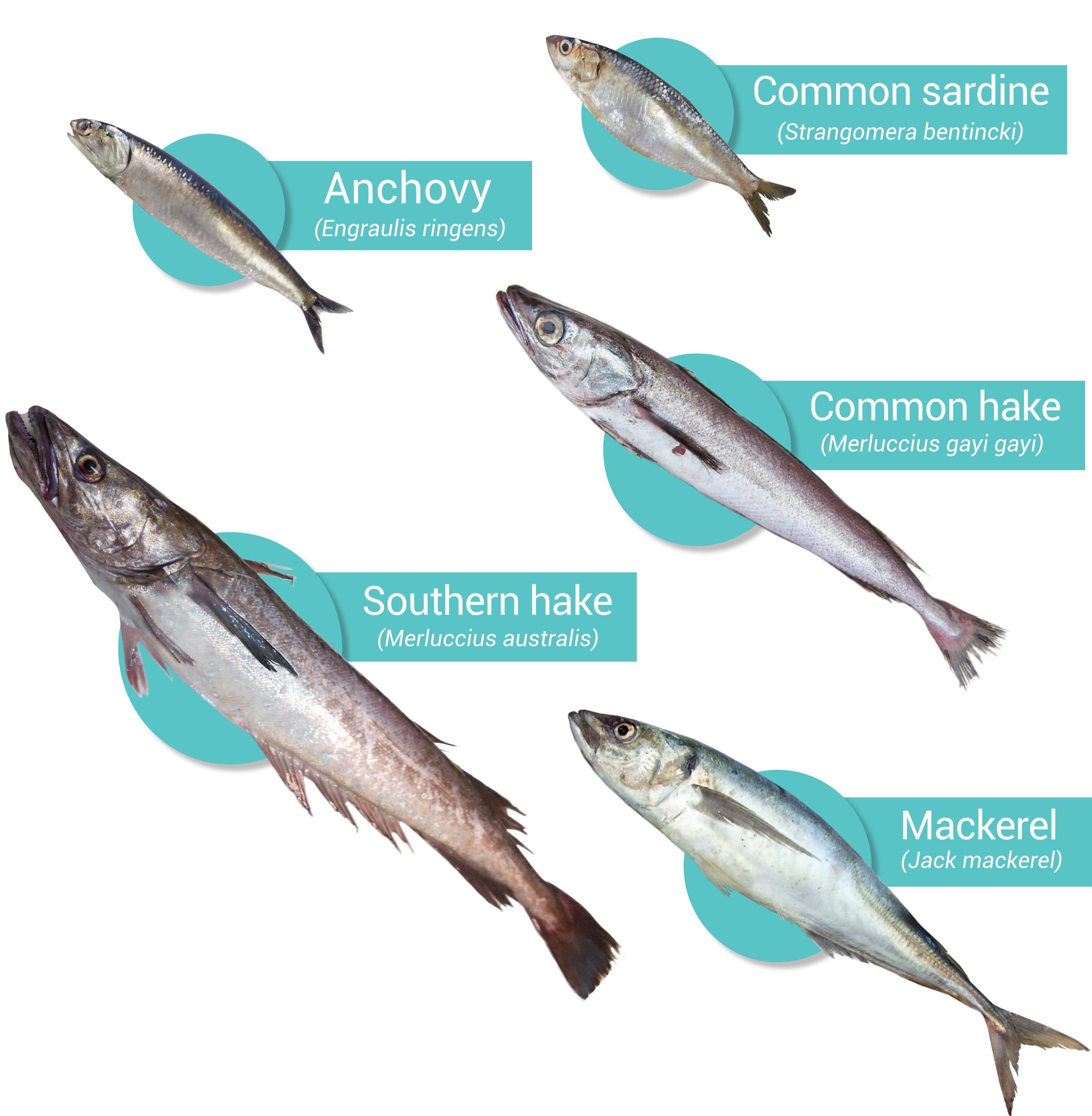
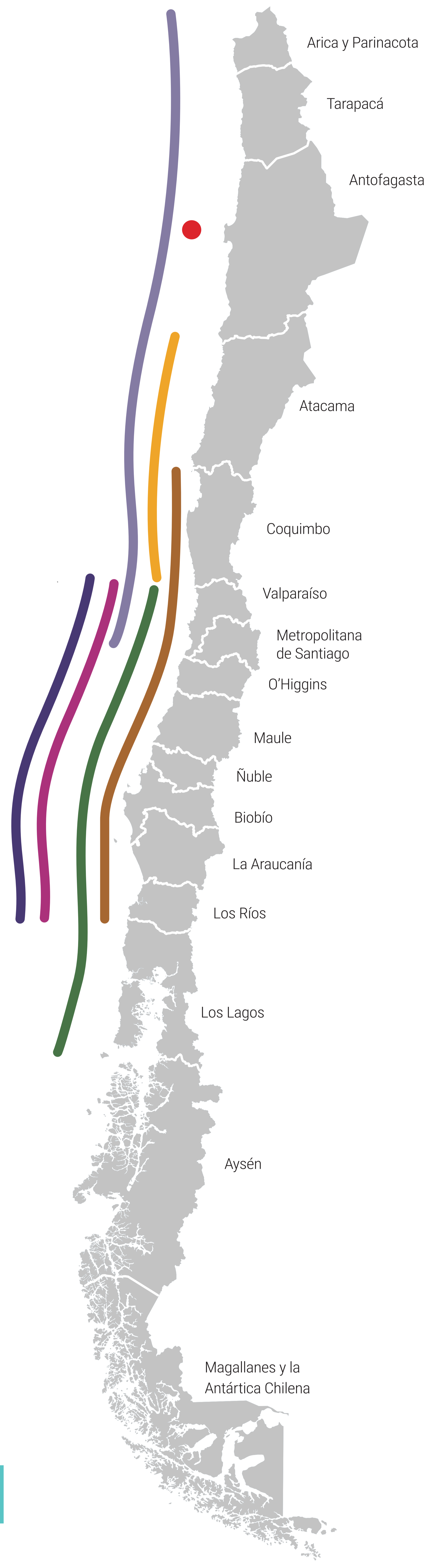
PROYECTED SURVEYS 2024

192  Days of operation

7  Surveys

ANNUAL

-  Hydroacoustic evaluation of sardine and anchovy stocks between the Valparaíso and Los Ríos regions of Chile / 30 days. Summer
-  Hydroacoustic evaluation of the northern anchovy recruitment between the Atacama and Coquimbo regions of Chile / 26 days.
-  Hydroacoustic evaluation of the jack mackerel between the Arica y Parinacota and Valparaíso regions of Chile / 43 days.
-  Hydroacoustic evaluation of sardine and anchovy stocks between the Valparaíso and Los Ríos regions of Chile / 30 days. Autumn.
-  Hydroacoustic evaluation of common hake between the Coquimbo and Los Ríos regions of Chile / 32 days.
-  Evaluation of the spawning stock of anchovy and common sardine between the Valparaíso and Los Lagos region of Chile / 19 days.
-  Oceanographic expedition in the Atacama Trench Atacama region of Chile / 10 days.



www.ifop.cl