

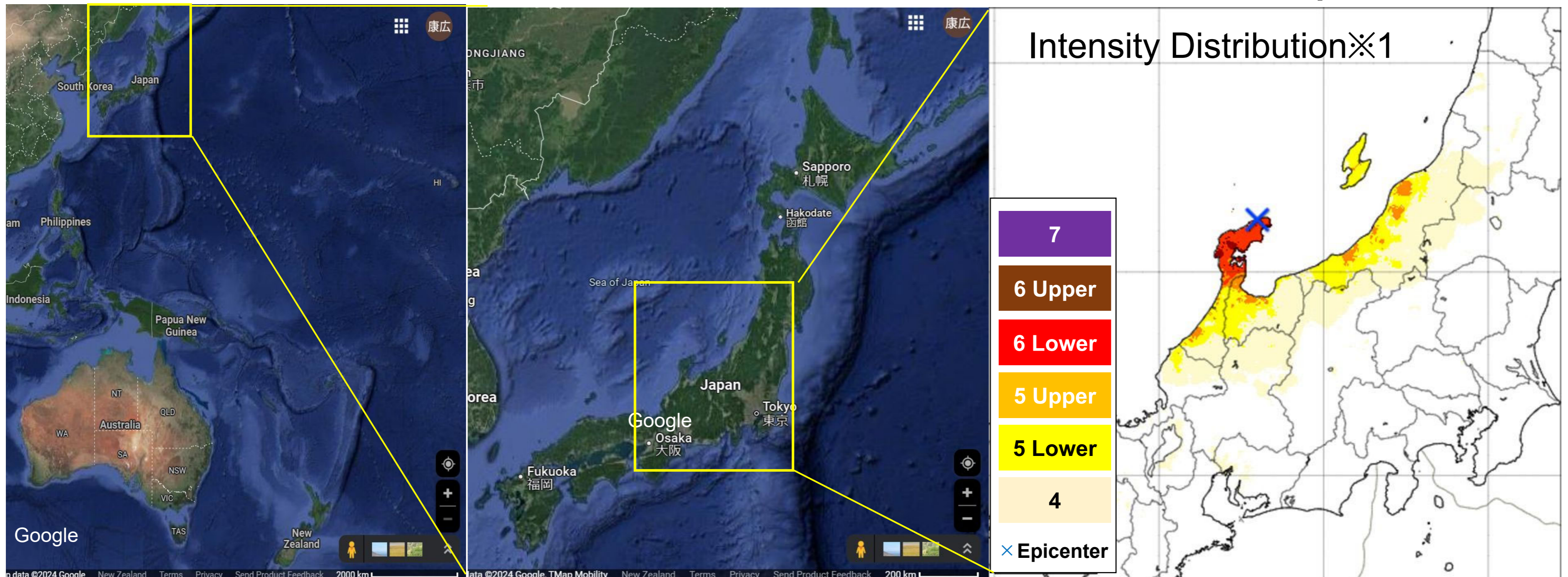
Emergency Survey Operations after the 2024 Noto Peninsula Earthquake by JAMSTEC



Yasuhiro Namba & Keitaro Kubo
MarE3/JAMSTEC

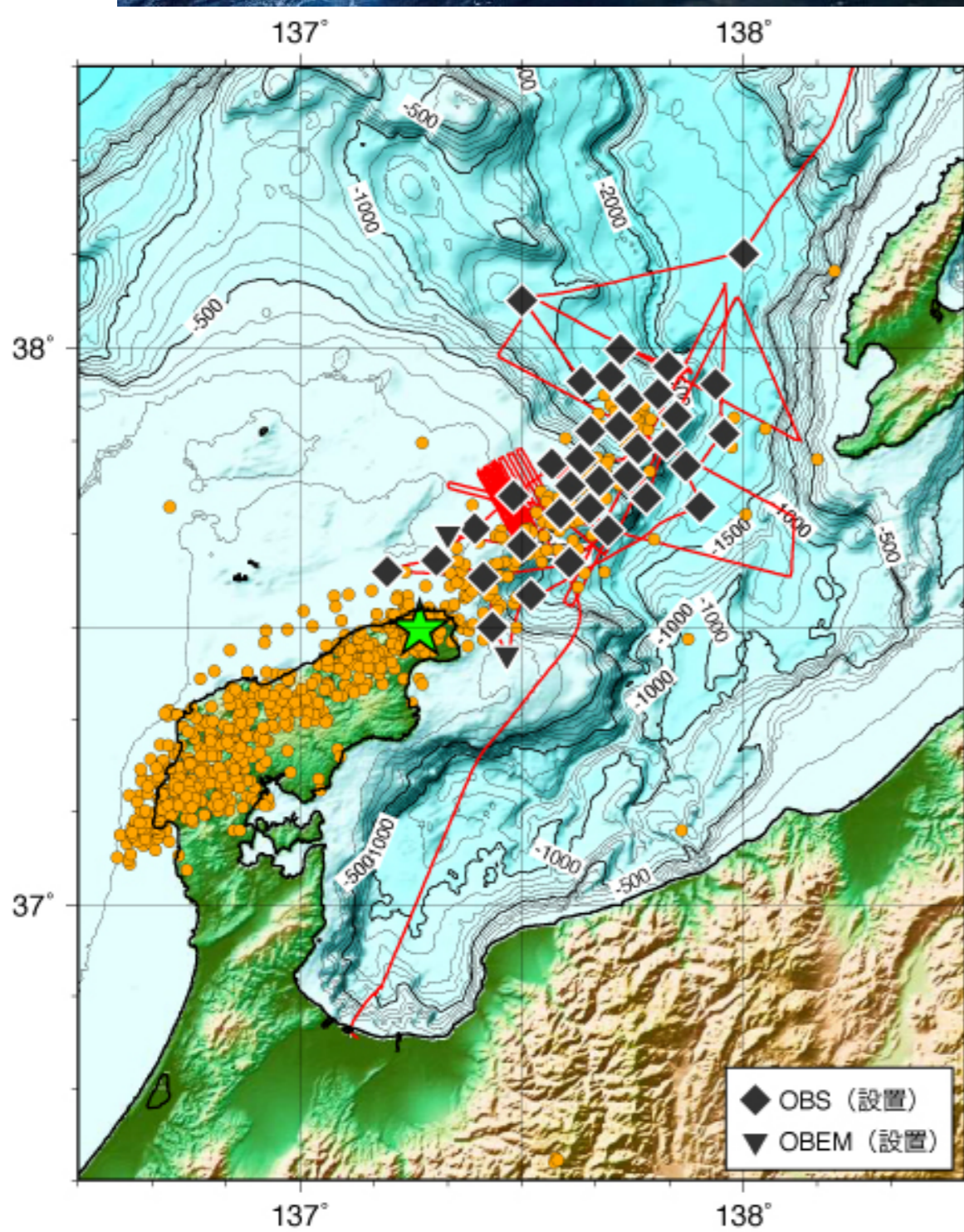
nambay@jamstec.go.jp keitarok@jamstec.go.jp

2024 Noto Peninsula Earthquake

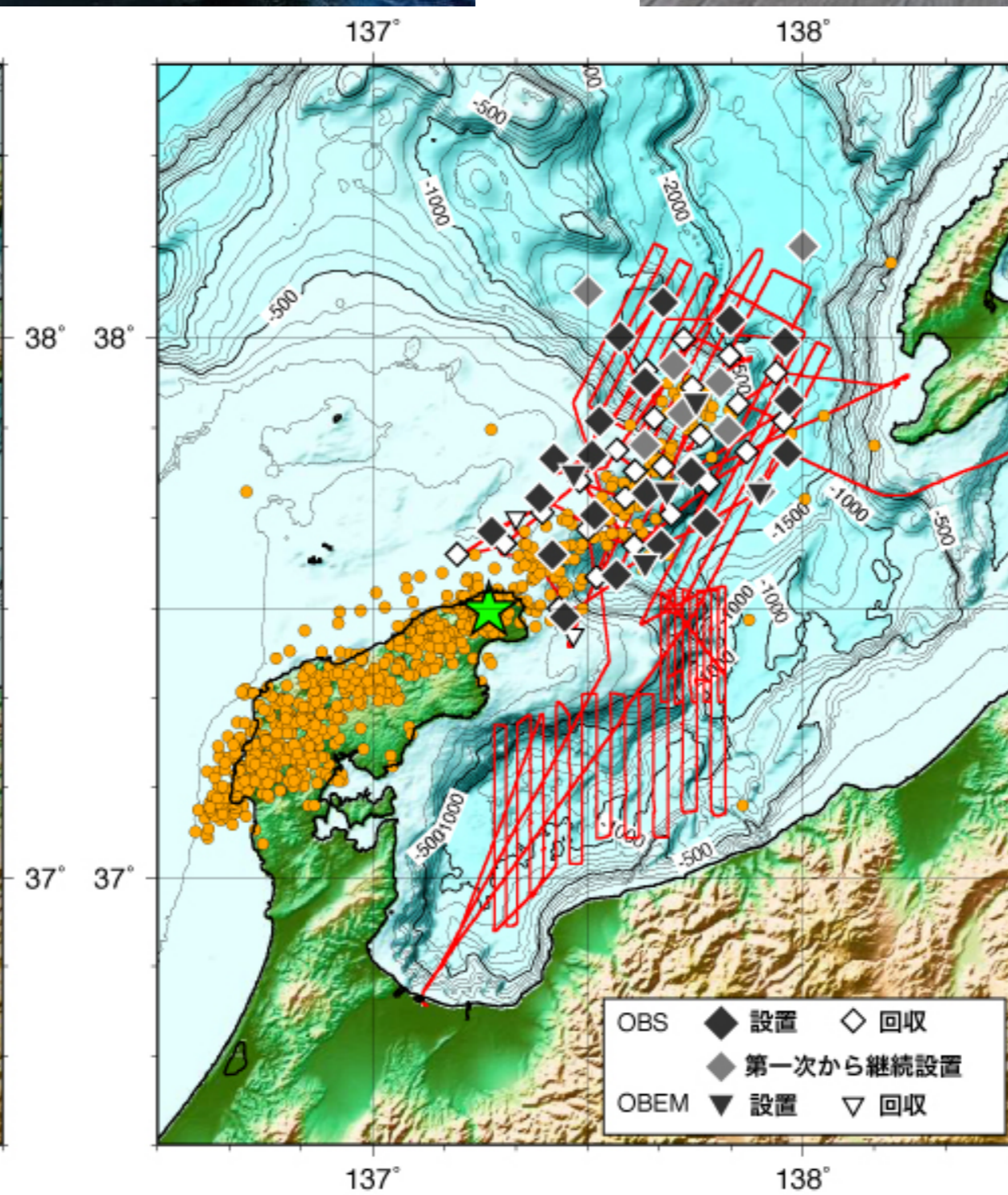


At 16:10 on 1 January 2024, an earthquake of magnitude 7.6 centered on the Noto Peninsula, Japan, caused a temblor of an intensity of 7. Also, a tsunami of up to 1.2 m was observed. The earthquake caused many deaths (299 as of 3rd July 2024), injuries, collapse of houses and buildings, fires and landslides.

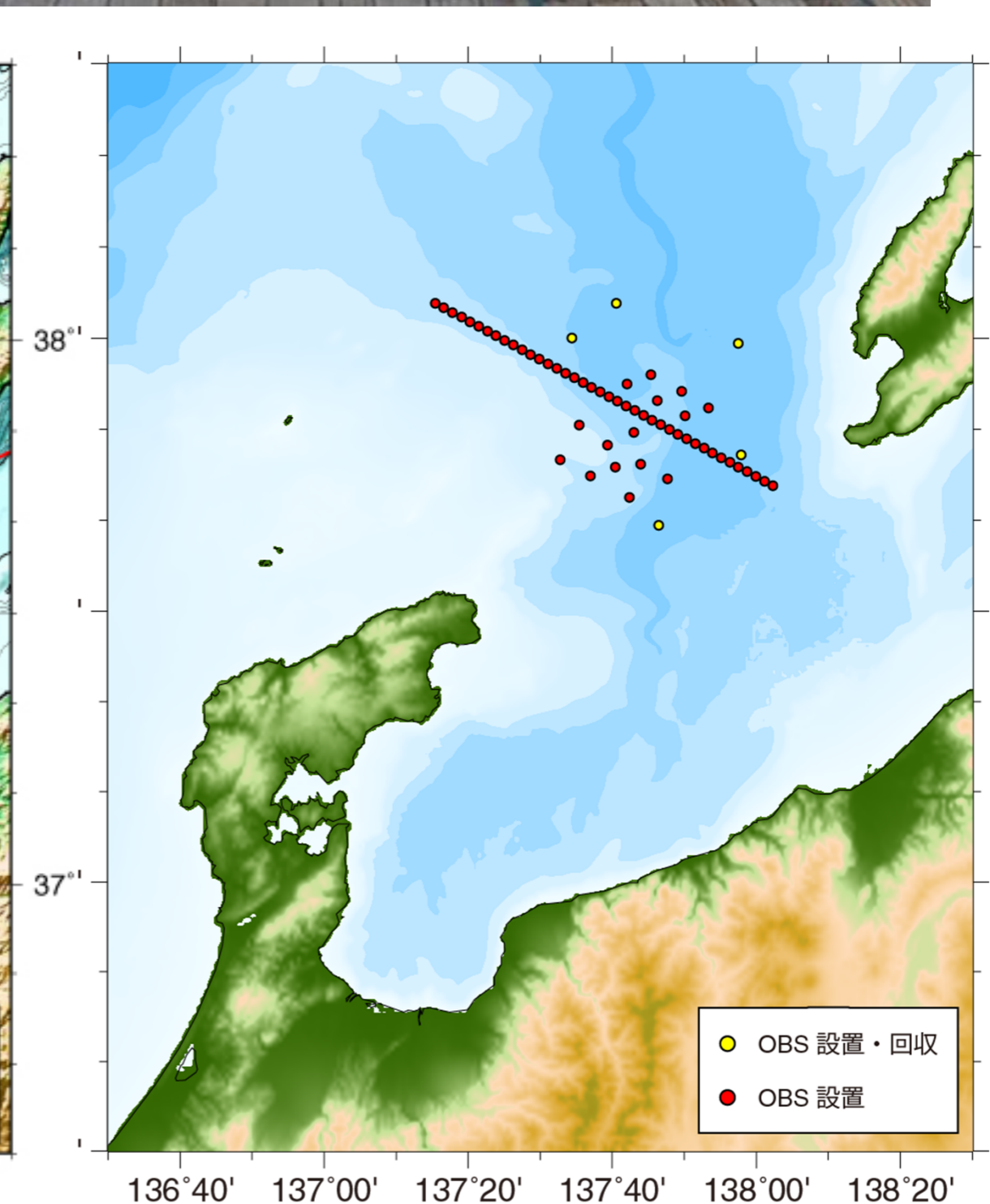
※1 <https://www.jma.go.jp/jma/press/2401/01a/kaisetsu202401011810.pdf>



1st Survey



2nd Survey



4th Survey

- 1st Survey: 16th-23rd Jan., 2024, w/ OBS, OBEM, SBP, MBES as JAMSTEC operation
- 2nd Survey: 19th Feb.-1st Mar., 2024, w/ OBS, OBEM, SBP, MBES as JAMSTEC operation
- 3rd Survey: 4th -16th Mar., 2024, w/ MCS, PC, MC, CTD as shared operation
- 4th Survey: 15th -22nd Jun., 2024, w/ OBS, OBEM, SBP, MBES as JAMSTEC operation