

Research fleet renewal



The Netherlands

Inmartech 2023 Barcelona

Yvo Witte

'Old' research fleet



RV Stern



Length: 14.6m
Speed: 15 knts
Age: 46 years



Working area: Wadden Sea



Length: 19m
Speed: 21 knts

RV Adriaen Coenen



Building process at Next
Generation Shipyards in
Lauwersoog
(The Netherlands)

RV Navicula

Length: 23m
Speed: 7 knts
Age: 42 years



RV Wim Wolff

Length: 36m
Speed: 12 knts



Working area:
Wadden Sea, Delta and
near coastal North Sea

Building process at
Tekla Bodewes
Shipyards in Harlingen
(The Netherlands)



Wim Wolff is currently in its finishing stage. This will probably take until okt/nov 2023



RV Pelagia

Length: 66m
Breadth: 12.5m
Speed: 10 knts
Age: 31 years
Berths: 25



Working area:
World wide except polar
regions



Working area:
Worldwide,
and near polar
regions
(Ice-class 1C)

Anna Weber van Bosse

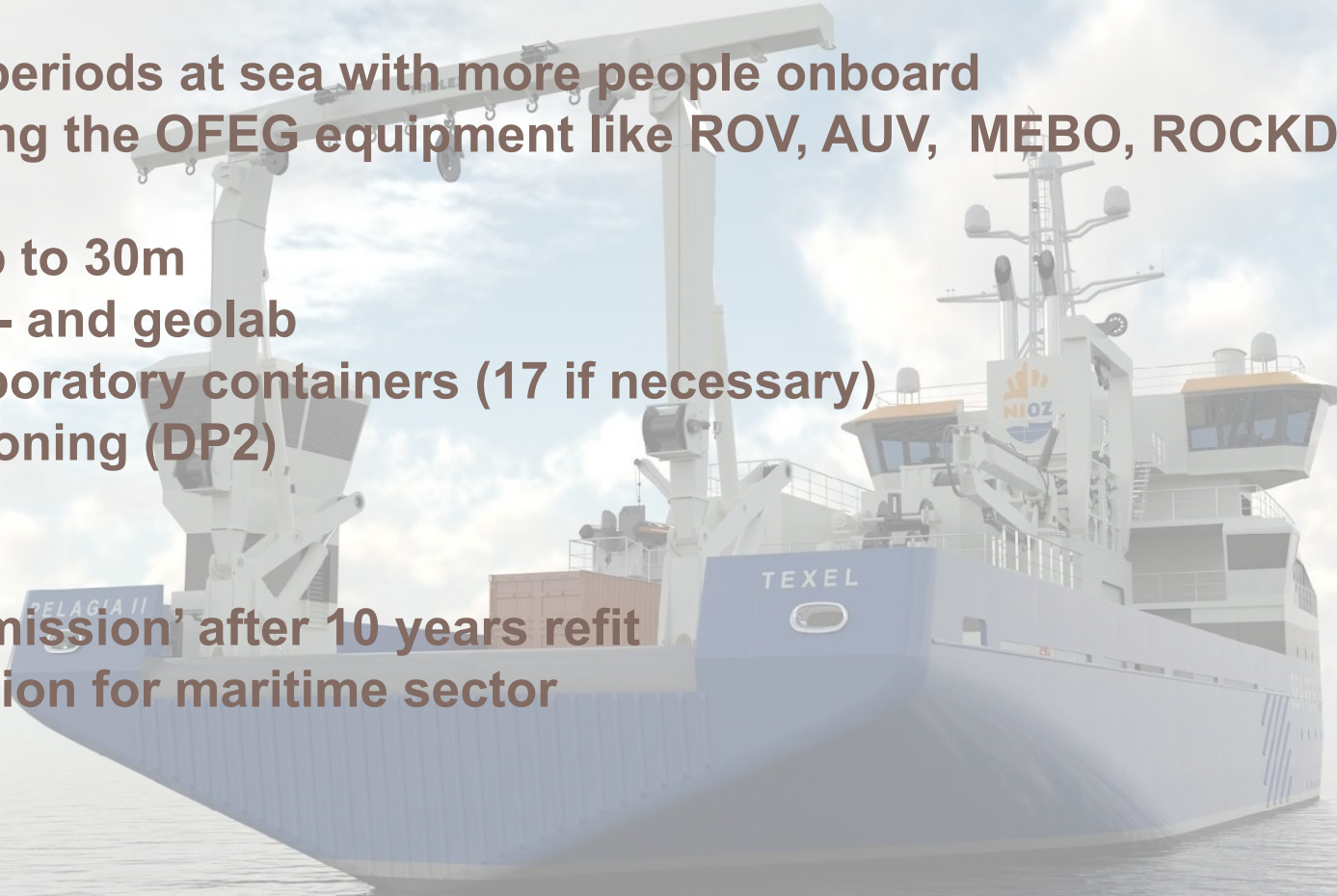
Length: 75-82m
Breadth: 17-18m
Speed: 12 knts at 85%
Berths: 47



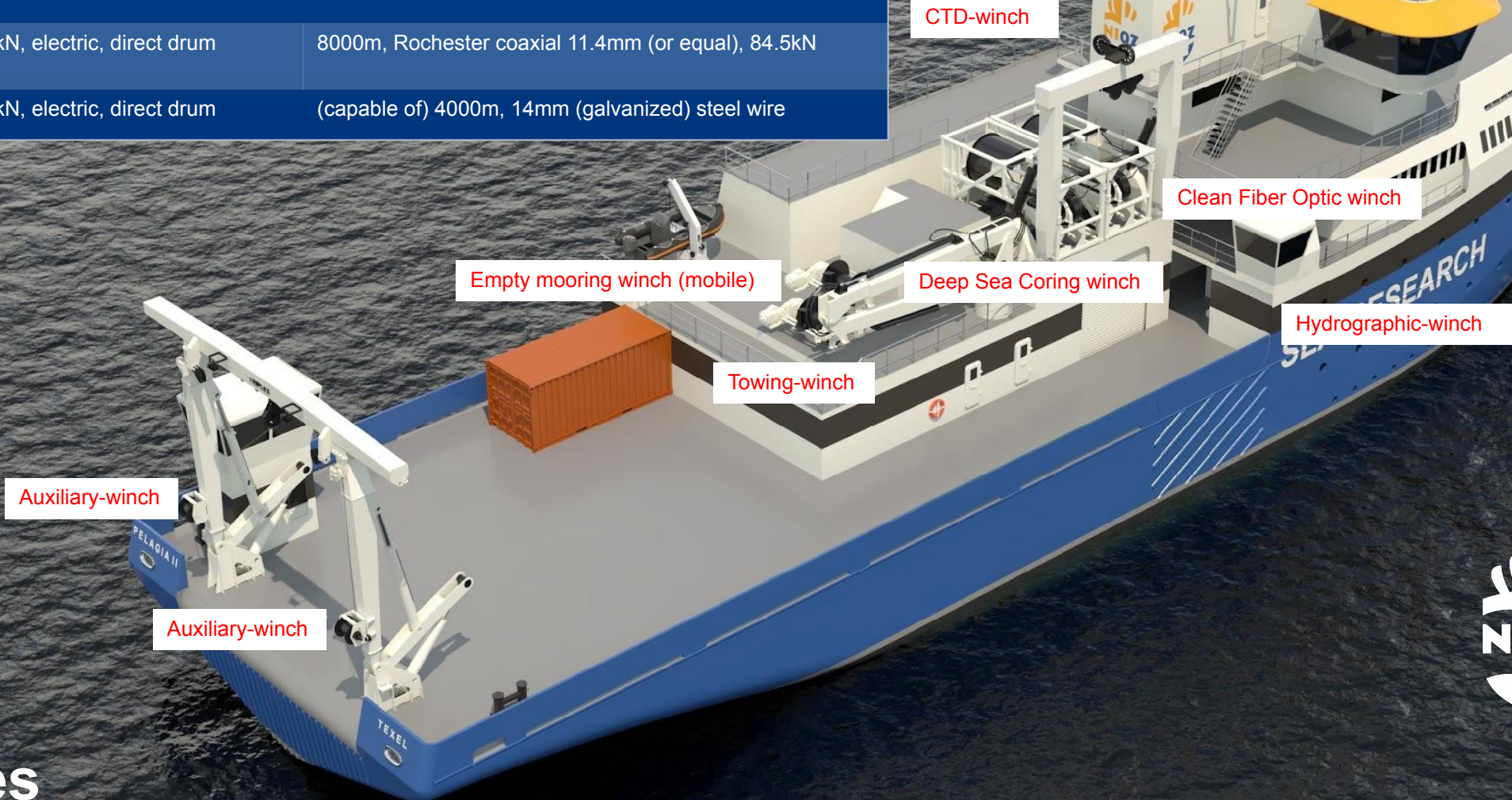
Features of the Anna Weber van Bosse



- Larger -> long periods at sea with more people onboard
- Capable handling the OFEG equipment like ROV, AUV, MEBO, ROCKDRILL
- Drop keel
- Piston cores up to 30m
- Main-, dry-, wet- and geolab
- Room for 12 laboratory containers (17 if necessary)
- Dynamic Positioning (DP2)
- Ice-class 1C
- Methanol ready
- Aim for 'zero emission' after 10 years refit
- Living lab function for maritime sector

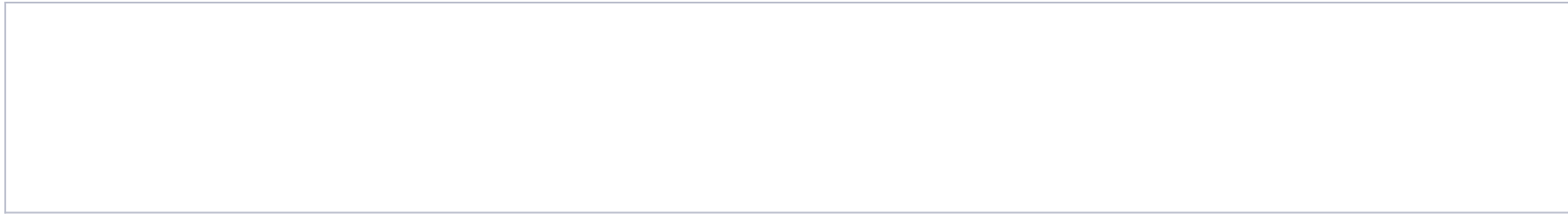


Deep Sea Coring Winch	200kN, electric, traction winch	8000m, 28mm Dyneema or Aramid with braided cover, 650kN
Clean FO Winch	35kN, electric, direct drum winch, Active Heave Compensation	9000m, 23mm synthetic with FO and copper conductors, 180kN
CTD winch	65kN, electric, direct drum winch, Active Heave Compensation	8000m, Rochester coaxial 11.4mm (or equal), 84.5kN
Auxiliary winches	100kN, hydraulic, direct drum	150m, Galvanized steel wire (6x36), 140kN
Hydrographic winch	5kN, electric, direct drum	150m, stainless steel 6mm, 20kN
Towing winch	65kN, electric, direct drum	8000m, Rochester coaxial 11.4mm (or equal), 84.5kN
Mobile winch	90kN, electric, direct drum	(capable of) 4000m, 14mm (galvanized) steel wire

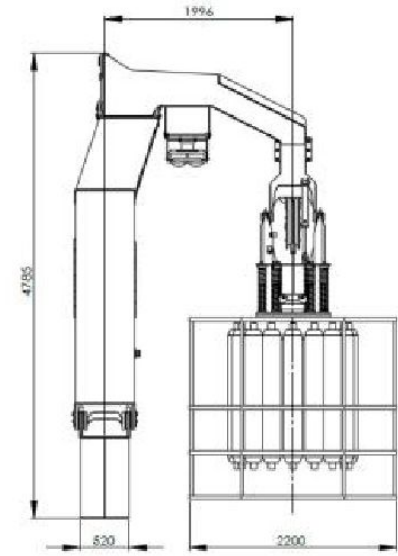
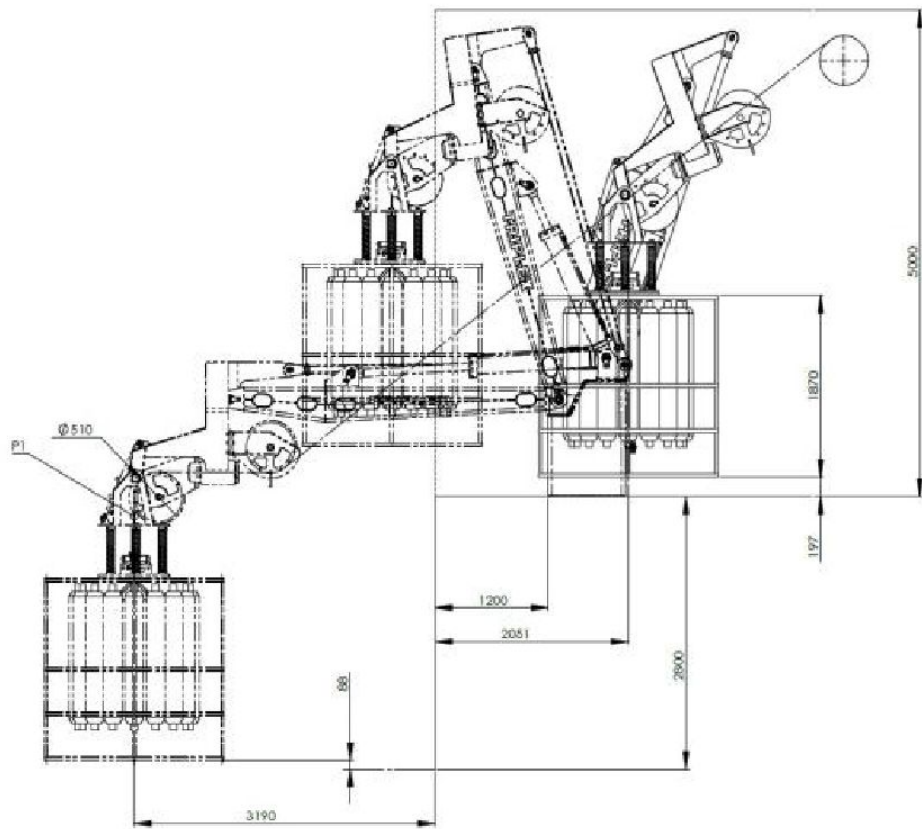
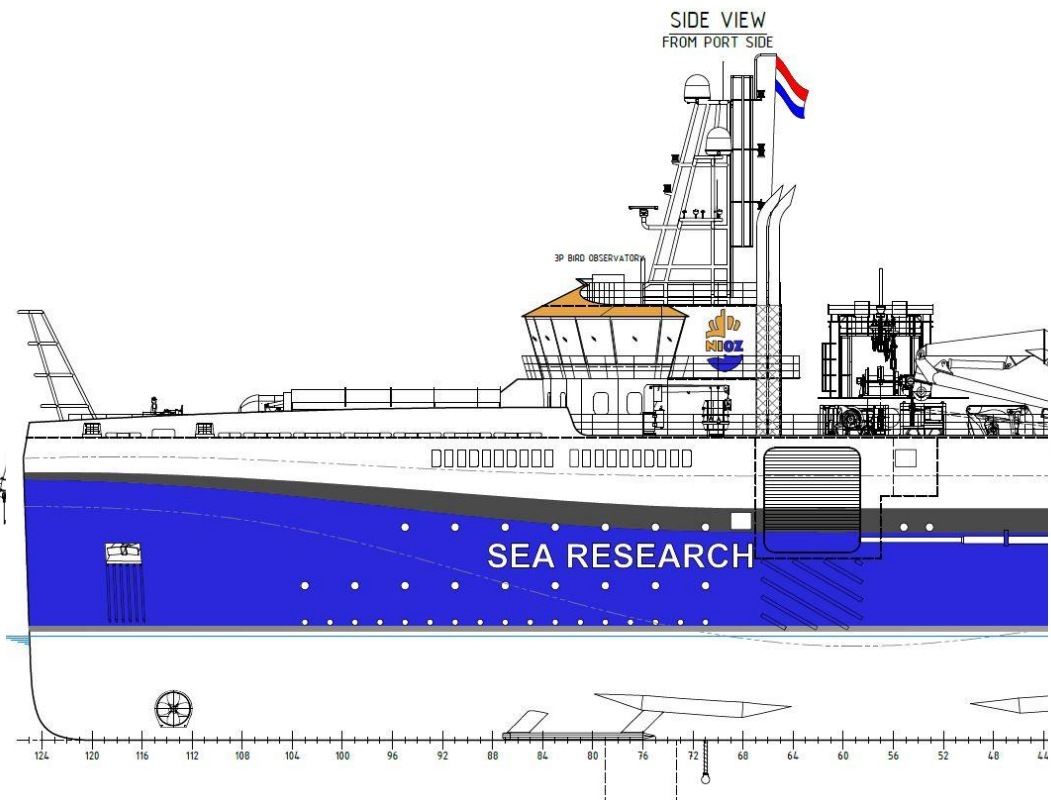
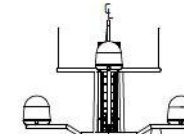


Winches

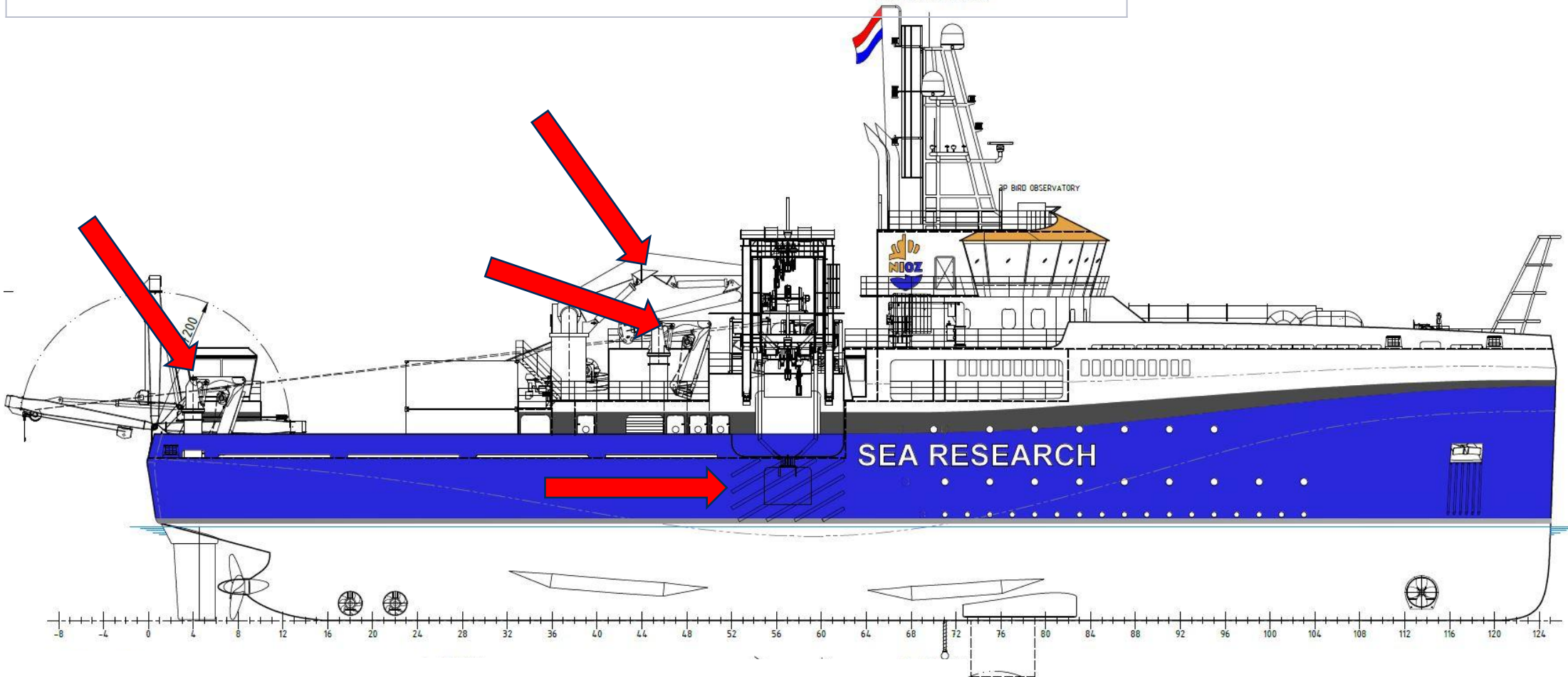
Handling and deployment systems



FRONT VIEW

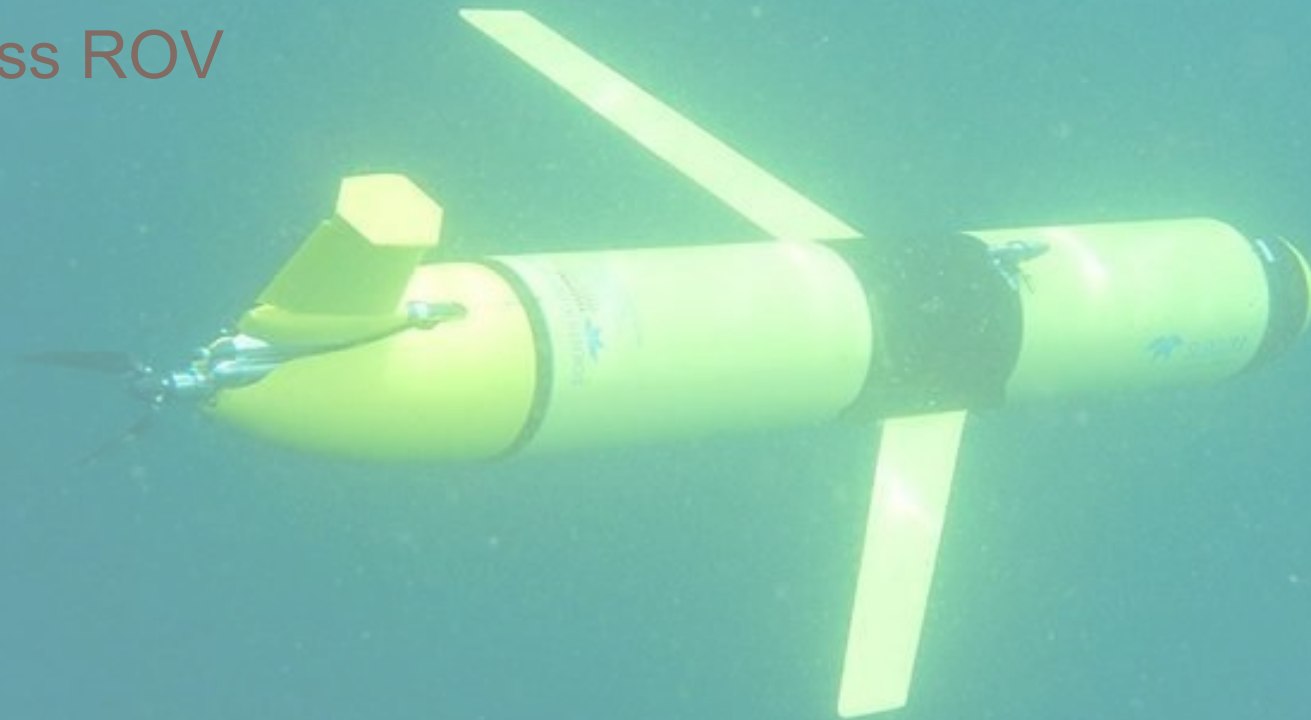


Cranes



Coming years: large scale infrastructure

- 3 gliders
- 1 AUV
- Working class ROV



Questions?



@: Yvo.Witte@nioz.nl